



Search by keyword or catalog number

All Products

[SCIENTIFIC](#) | [SAFETY](#) | [HEALTHCARE](#) | [SCIENCE EDUCATION](#) | [BROWSE ALL PRODUCTS](#)

[Chemical Structure](#) | [MSDS](#) | [Product Certificates](#) | [Life Science Search](#)

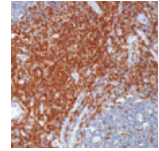
Customer Service: 800-766-7000 | Web Support: 877-885-2081 | [All Other Contact Info](#)

[Help](#) | [Part of Thermo Fisher Scientific](#)

## anti-CD43/T-Cell Marker Ab-1, Clone: DF-T1, Thermo Scientific™ Lab Vision™

The Thermo Scientific CD43/T-Cell Marker Ab-1, Mouse Monoclonal Antibody provides accurate, reproducible results.

CD43 (leukosialin, sialoporphin, or leukocyte sialoglycoprotein) is a cell surface glycoprotein which is expressed on all thymocytes and T-cells. CD43 is involved in activation of T cells, B cells, NK cells, and monocytes



[Enlarge](#)

**Host Species:** Mouse  
**Clone:** DF-T1  
**Isotype:** IgG1  
**Species Reactivity:** Human. Does not react with rat. Others not tested.  
**Epitope:** Not determined  
**Immunogen:** Myeloblastic KG1 cells  
**Molecular Weight:** 95/115/135kDa (depending upon extent of glycosylation)  
**Positive Control:** Tonsil or lymph node  
**Cellular Localization:** Membrane  
[View Specifications](#)

[+1 View More](#)

(6 item(s) in product Group)

[Items](#) | [Specifications](#)

### Description

**Host Species:** Mouse  
**Clone:** DF-T1  
**Isotype:** IgG1  
**Species Reactivity:** Human. Does not react with rat. Others not tested.  
**Epitope:** Not determined  
**Immunogen:** Myeloblastic KG1 cells  
**Molecular Weight:** 95/115/135kDa (depending upon extent of glycosylation)  
**Positive Control:** Tonsil or lymph node  
**Cellular Localization:** Membrane

Ab-1 has been shown useful in identification and classification of T-cell malignancies. **Applications:** Flow Cytometry, Immunohistochemistry (Paraffin)  
**Recommended Storage:** 4°C, Do Not Freeze

**Note:** †USA: IVD; Int'l: IVD

Format	Conjugate	Quantity	Concentration	Mfr. No.	Cat. No.	Availability	Quantity	Price
Concentrated	Unlabeled	1mL	200µg/mL	MS-146-P	<a href="#">MS146P</a>	N/A ⓘ	<input type="text"/>	Each for \$294.48
Concentrated	Unlabeled	100µL	200µg/mL	MS-146-P0	--	N/A ⓘ	N/A	--
Concentrated	Unlabeled	500µL	200µg/mL	MS-146-P1	<a href="#">MS146P1</a>	N/A ⓘ	<input type="text"/>	Each for \$201.24
Concentrated	Unlabeled	100µL	1mg/mL	MS-146-P1ABX	<a href="#">MS146P1ABX</a>	N/A ⓘ	<input type="text"/>	Each for \$263.64
Concentrated	Unlabeled	200µL	1mg/mL	MS-146-PABX	<a href="#">MS146PABX</a>	N/A ⓘ	<input type="text"/>	Each for \$342.48
Prediluted	Unlabeled	7mL	n/a	MS-146-R7	<a href="#">MS146R7</a>	N/A ⓘ	<input type="text"/>	Each for \$170.59
	Unlabeled	12mL	n/a	MS-146-RQ	<a href="#">MS146RQ</a>	N/A ⓘ	<input type="text"/>	Each for \$259.52
	Unlabeled	5 Slides	n/a	MS-146-PCS	--	N/A ⓘ	N/A	--

[Add Items to Cart](#)

Feedback

[Report a content error](#)

[Related Products](#)

Catalog No: BDB555749 **BSR/VR**  
**BSR/VR** [anti-IgG1 k Mouse, R-PE, Clone: MOPC-21, Isotype Control, BD > 100 Tests; R-PE](#)

**Price:**  
 Each for \$115.00

**Quantity:**

[Check Availability](#)

**Add to Cart**

[View product Group](#) or [See similar Items](#)

Catalog No: BDB553057 **BSR/VR**  
**BSR/VR** [anti-CD3e, Clone: 145-2C11, BD > 0.5mg; Unlabeled, NA/LE](#)

**Price:**  
 Each for \$235.00

**Quantity:**

[Check Availability](#)

**Add to Cart**

[View product Group](#) or [See similar Items](#)

Catalog No: RM2106S0  
[anti-Cytokeratin 5, Clone: EP1601Y, Thermo Scientific™ Lab Vision™ > 100µL; Unlabeled; Supernatant](#)

**Price:**  
 Each for \$222.55

**Quantity:**

[Check Availability](#)

**Add to Cart**

[View product Group](#) or [See similar Items](#)

[Back to Top](#)