

## Anti-Islet 1 antibody [1H9] ab86472

★★★★★ 1 Abreviews | 4 References | 5 Images

## Overview

<b>Product name</b>	Anti-Islet 1 antibody [1H9]
<b>Description</b>	Mouse monoclonal [1H9] to Islet 1
<b>Tested applications</b>	Flow Cyt, WB, ELISA, IHC-P, ICC/IF
<b>Species reactivity</b>	<b>Reacts with:</b> Human
<b>Immunogen</b>	Recombinant fragment corresponding to Human Islet 1 aa 150-349. Purified recombinant fragment of Human Islet 1 expressed in E. Coli Database link: <a href="#">P61371</a>
<b>Positive control</b>	Transfected HEK293 cell lysate. Human lung cancer tissue and cervical carcinoma tissue.

## Properties

<b>Form</b>	Liquid
<b>Storage instructions</b>	Shipped at 4°C. Upon delivery aliquot and store at -20°C. Avoid freeze / thaw cycles.
<b>Storage buffer</b>	Preservative: 0.03% Sodium Azide Constituents: Ascites
<b>Purity</b>	Ascites
<b>Clonality</b>	Monoclonal
<b>Clone number</b>	1H9
<b>Isotype</b>	IgG1

## Applications

Our [Abpromise guarantee](#) covers the use of **ab86472** in the following tested applications.

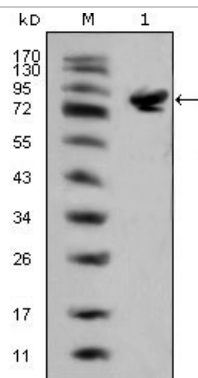
The application notes include recommended starting dilutions; optimal dilutions/concentrations should be determined by the end user.

Application	Abreviews	Notes
<a href="#">Flow Cyt</a>		1/50 - 1/100. Ab81216-Mouse monoclonal IgG1, is suitable for use as an isotype control with this antibody.
<a href="#">WB</a>		1/500 - 1/2000. Predicted molecular weight: 39 kDa.
<a href="#">ELISA</a>		1/10000.
<a href="#">IHC-P</a>		1/200 - 1/1000.
<a href="#">ICC/IF</a>		1/200 - 1/1000.

## Target

<b>Function</b>	Binds to one of the cis-acting domain of the insulin gene enhancer.
<b>Tissue specificity</b>	Expressed in subsets of neurons of the adrenal medulla and dorsal root ganglion, inner nuclear and ganglion cell layers in the retina, the pineal and some regions of the brain.
<b>Sequence similarities</b>	Contains 1 homeobox DNA-binding domain. Contains 2 LIM zinc-binding domains.
<b>Cellular localization</b>	Nucleus.

## Anti-Islet 1 antibody [1H9] images

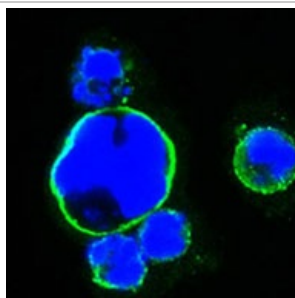


Western blot - Islet 1 antibody [1H9] (ab86472)

Anti-Islet 1 antibody [1H9] (ab86472) at 1/500 dilution + HEK293 cells transfected with full length Islet 1 (aa1-349)-hlgGfc

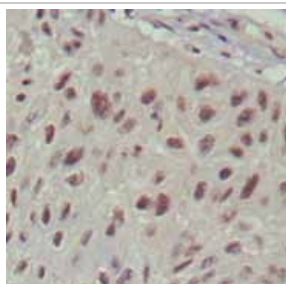
**Predicted band size** : 39 kDa

Note: The molecular weight is larger than expected, as the recombinant protein is not the endogenous protein, but rather the fc-fusion protein



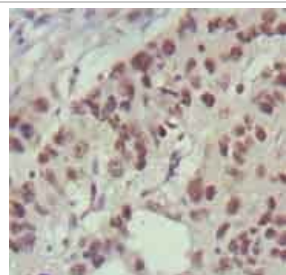
Immunocytochemistry/ Immunofluorescence - Islet 1 antibody [1H9] (ab86472)

Confocal immunofluorescence analysis of HEK293 cells trasfected with full-length Islet 1-hlgGfc using ab86472 at 1/150 dilution (green). Blue: DRAQ5 fluorescent DNADye.



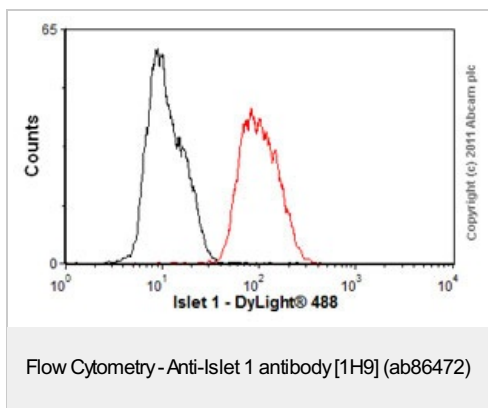
Immunohistochemistry (Formalin/PFA-fixed paraffin-embedded sections) - Islet 1 antibody [1H9] (ab86472)

ab86472 at a 1/200 dilution staining Islet 1 in human lung cancer tissue. DAB staining shows nuclear localisation.



Immunohistochemistry (Formalin/PFA-fixed paraffin-embedded sections) - Islet 1 antibody [1H9] (ab86472)

ab86472 at a 1/200 dilution staining Islet 1 in human cervical carcinoma tissue. DAB staining shows nuclear localization.



Overlay histogram showing SH-SY5Y cells stained with ab86472 (red line). The cells were fixed with 80% methanol (5 min) and then permeabilized with 0.1% PBS-Tween for 20 min. The cells were then incubated in 1x PBS / 10% normal goat serum / 0.3M glycine to block non-specific protein-protein interactions followed by the antibody (ab86472, 1/50 dilution) for 30 min at 22°C. The secondary antibody used was DyLight® 488 goat anti-mouse IgG (H+L) (ab96879) at 1/500 dilution for 30 min at 22°C. Isotype control antibody (black line) was mouse IgG1 [ICIGG1] (ab91353, 2µg/1x10<sup>6</sup> cells) used under the same conditions. Acquisition of >5,000 events was performed. This antibody gave a positive result in SH-SY5Y cells fixed with 4% paraformaldehyde (10 min)/permeabilized in 0.1% PBS-Tween for 20 min used under the same conditions.

**Please note:** All products are "FOR RESEARCH USE ONLY AND ARE NOT INTENDED FOR DIAGNOSTIC OR THERAPEUTIC USE"

### Our Abpromise to you: Quality guaranteed and expert technical support

- Replacement or refund for products not performing as stated on the datasheet
- Valid for 12 months from date of delivery\*\*
- Response to your inquiry within 24 hours
- We provide support in Chinese, English, French, German, Japanese and Spanish
- Extensive multi-media technical resources to help you
- We investigate all quality concerns to ensure our products perform to the highest standards

If the product does not perform as described on this datasheet, we will offer a refund or replacement. For full details of the Abpromise, please visit <http://www.abcam.com/abpromise> or contact our technical team.

### Terms and conditions

- Guarantee only valid for products bought direct from Abcam or one of our authorized distributors
- \*\*Regional variations to our Abpromise may apply to the following countries: China, Korea, Singapore, Malaysia, Taiwan and Thailand, which operate a 120 day guarantee. Please contact your regional office for further details

Visit us at: [www.abcam.com](http://www.abcam.com)