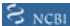



Anti-SOX9 antibody [EPR14335] ab185230



7 Images

Overview

Product name	Anti-SOX9 antibody [EPR14335]
Description	Rabbit monoclonal [EPR14335] to SOX9
Tested applications	ICC/IF, WB, IHC-P, Flow Cyt
Species reactivity	Reacts with: Mouse, Rat, Human
Immunogen	Recombinant fragment within Human SOX9 aa 150-300. The exact sequence is proprietary. Database link: P48436
	 Run BLAST with  Run BLAST with
Positive control	SW480 and PC3 cell lysates; Human colon, Rat colon and Mouse colon tissues; SW480 cells; PC3 cells.
General notes	Produced using Abcam's RabMAb [®] technology. RabMAb [®] technology is covered by the following U.S. Patents, No. 5,675,063 and/or 7,429,487.

Properties

Form	Liquid
Storage instructions	Shipped at 4°C. Store at +4°C short term (1-2 weeks). Upon delivery aliquot. Store at -20°C long term. Avoid freeze / thaw cycle.
Storage buffer	Preservative: 0.01% Sodium azide Constituents: 59% PBS, 40% Glycerol, 0.05% BSA
Purity	Protein A purified
Clonality	Monoclonal
Clone number	EPR14335
Isotype	IgG

Applications

Our [Abpromise guarantee](#) covers the use of **ab185230** in the following tested applications.

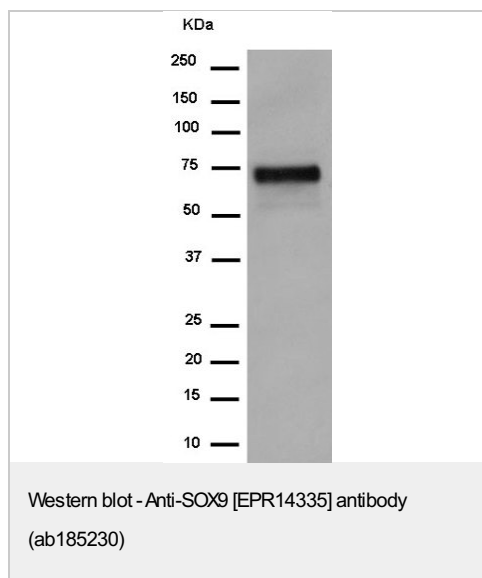
The application notes include recommended starting dilutions; optimal dilutions/concentrations should be determined by the end user.

Application	Abreviews	Notes
ICC/IF		1/250.
WB		1/1000 - 1/10000. Detects a band of approximately 70 kDa (predicted molecular weight: 56 kDa).
IHC-P		1/2000.
Flow Cyt		1/190.

Target

Function	Plays an important role in the normal skeletal development. May regulate the expression of other genes involved in chondrogenesis by acting as a transcription factor for these genes.
Involvement in disease	Defects in SOX9 are the cause of campomelic dysplasia (CMD1) [MIM:114290]. CMD1 is a rare, often lethal, dominantly inherited, congenital osteochondrodysplasia, associated with male-to-female autosomal sex reversal in two-thirds of the affected karyotypic males. A disease of the newborn characterized by congenital bowing and angulation of long bones, unusually small scapulae, deformed pelvis and spine and a missing pair of ribs. Craniofacial defects such as cleft palate, micrognathia, flat face and hypertelorism are common. Various defects of the ear are often evident, affecting the cochlea, malleus incus, stapes and tympanum. Most patients die soon after birth due to respiratory distress which has been attributed to hypoplasia of the tracheobronchial cartilage and small thoracic cage.
Sequence similarities	Contains 1 HMG box DNA-binding domain.

Anti-SOX9 antibody [EPR14335] images

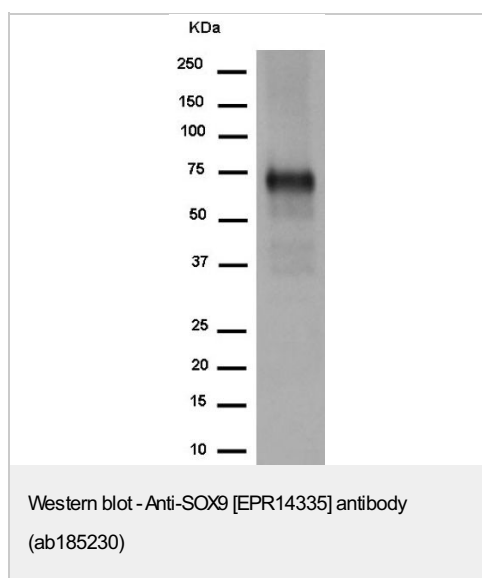


Anti-SOX9 antibody [EPR14335] (ab185230) at 1/20000 dilution + SW480 cell lysate at 20 µg

Secondary

Goat Anti-Rabbit IgG, (H+L), Peroxidase conjugated at 1/1000 dilution

Predicted band size : 56 kDa

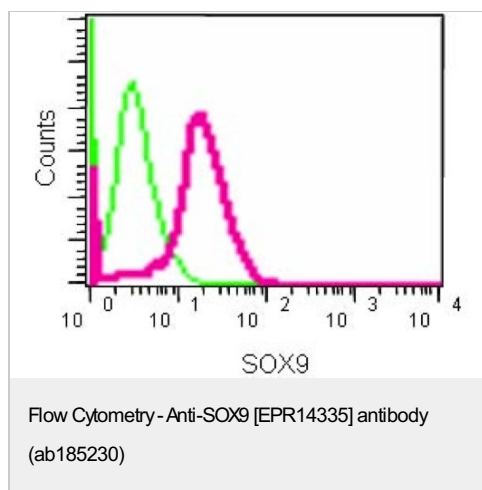


Anti-SOX9 antibody [EPR14335] (ab185230) at 1/5000 dilution + PC3 cell lysate at 20 µg

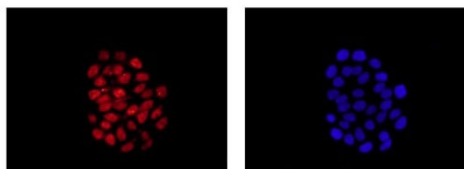
Secondary

Goat Anti-Rabbit IgG, (H+L), Peroxidase conjugated at 1/1000 dilution

Predicted band size : 56 kDa

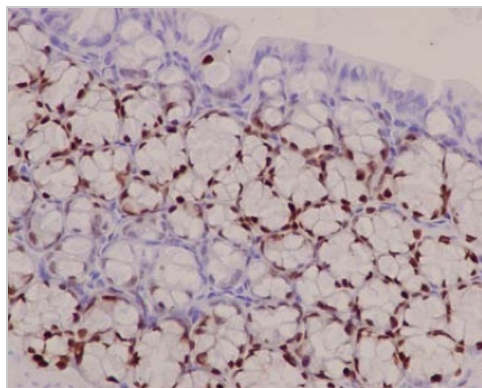


Flow Cytometric analysis of PC3 cells (2% paraformaldehyde-fixed) labeling SOX3 with ab185230 at 1/190 dilution (red) or a rabbit IgG (negative) (green), followed by Goat anti rabbit IgG (FITC) secondary at 1/150 dilution.



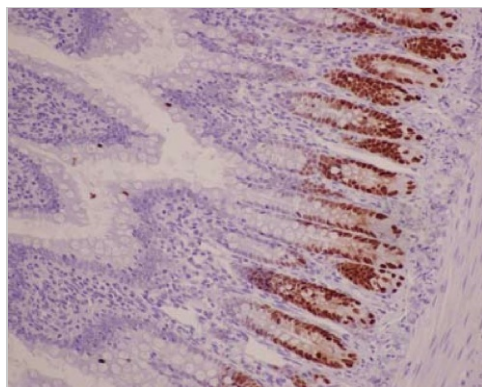
Immunocytochemistry/ Immunofluorescence - Anti-SOX9 [EPR14335] antibody (ab185230)

Immunofluorescent analysis of SW480 cells (4% paraformaldehyd-fixed) labeling SOX9 with ab185230 at 1/250 dilution followed by Goat anti rabbit IgG (AlexaFluor® 555) secondary at 1/200 dilution and counter-stained with DAPI (blue).



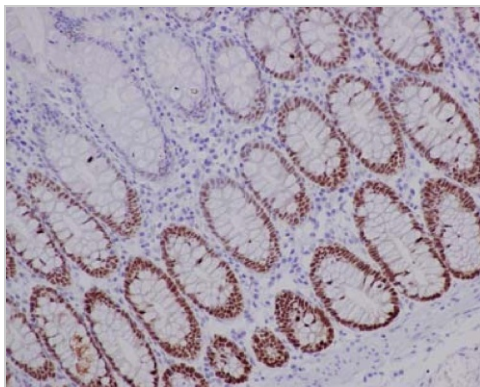
Immunohistochemistry (Formalin/PFA-fixed paraffin-embedded sections) - Anti-SOX9 [EPR14335] antibody (ab185230)

Immunohistochemical analysis of paraffin-embedded Mouse colon tissue labeling SOX9 with ab185230 at 1/2000 dilution followed by pre-diluted HRP-conjugated secondary antibody and counter-stained with Hematoxylin.



Immunohistochemistry (Formalin/PFA-fixed paraffin-embedded sections) - Anti-SOX9 [EPR14335] antibody (ab185230)

Immunohistochemical analysis of paraffin-embedded Rat colon tissue labeling SOX9 with ab185230 at 1/2000 dilution followed by pre-diluted HRP-conjugated secondary antibody and counter-stained with Hematoxylin.



Immunohistochemical analysis of paraffin-embedded Human colon tissue labeling SOX9 with ab185230 at 1/2000 dilution followed by pre-diluted HRP-conjugated secondary antibody and counter-stained with Hematoxylin.

Immunohistochemistry (Formalin/PFA-fixed paraffin-embedded sections) - Anti-SOX9 [EPR14335] antibody (ab185230)

Please note: All products are "FOR RESEARCH USE ONLY AND ARE NOT INTENDED FOR DIAGNOSTIC OR THERAPEUTIC USE"

Our Abpromise to you: Quality guaranteed and expert technical support

- Replacement or refund for products not performing as stated on the datasheet
- Valid for 12 months from date of delivery**
- Response to your inquiry within 24 hours
- We provide support in Chinese, English, French, German, Japanese and Spanish
- Extensive multi-media technical resources to help you
- We investigate all quality concerns to ensure our products perform to the highest standards

If the product does not perform as described on this datasheet, we will offer a refund or replacement. For full details of the Abpromise, please visit <http://www.abcam.com/abpromise> or contact our technical team.

Terms and conditions

- Guarantee only valid for products bought direct from Abcam or one of our authorized distributors
- **Regional variations to our Abpromise may apply to the following countries: China, Korea, Singapore, Malaysia, Taiwan and Thailand, which operate a 120 day guarantee. Please contact your regional office for further details

Visit us at: www.abcam.com