

DATASHEET

BRST-2 (GCDFP-15) Monoclonal Antibody, Purified

Catalog Number: SIG-3611

Available Size: 1.0 mL, L1 6mL, L2 6mL, LV 6mL

Description:

Purified Monoclonal Antibody against BRST-2 (GCDFP-15)
(Formerly Signet Catalog Nos: 611-01, 611-16 L1 Predilute, 611-26 L2 Predilute, 611-36 LV Predilute)

Clone:

D6

Host:

Mouse

Also Known As:

prolactin-inducible protein; secretory actin-binding protein; gross cystic disease fluid protein 15

IsoType:

IgG2a

Species Reactivity:

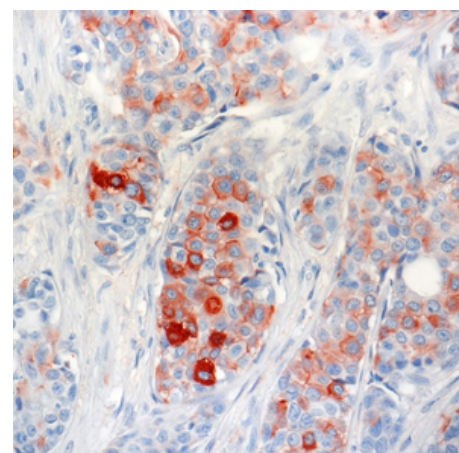
Human

Intended Use:

**** In Vitro Diagnostic (IVD) ****

Form:

Purified Antibody (in PBS with BSA + 0.1%NaN3)



Staining of BRST-2 (GCDFP-15), SIG-3611, on formalin fixed paraffin embedded human breast tumor tissue.

Specificity:

The BRST-2 clone D6 recognizes a 15kDa glycoprotein known as Gross Cystic Disease Fluid Protein-15 (GCDFP-15). The BRST-2 antigen is expressed by apocrine sweat glands, eccrine glands (variable), minor salivary glands, bronchial glands, metaplastic epithelium of the breast, benign sweat gland tumors of the skin and the serous cells of the submandibular gland. Breast carcinomas (primary and metastatic lesions) with apocrine features express the BRST-2 antigen. This antibody was generated against a gross cystic disease fluid protein 15.

Concentrated Format:

SIG-3611-1000 [1 mL]

Prediluted Formats:

SIG-3611-16 [6 mL] is ready to use with Peroxidase Anti-Peroxidase detection systems.

SIG-3611-26 [6 mL] is ready-to-use with Biotin-based detection systems such as USA Ultra Streptavidin Detection (SIG-32250).

SIG-3611-36 [6 mL] is ready-to-use with Biotin based detection systems on Ventana ES and Ventana NexES automated immunostainers.

Uses:

In Vitro Diagnostic (IVD) use in immunohistochemistry (IHC) test methods only.

This antibody is effective in immunohistochemistry (IHC).

Suggested Working Dilution:

The optimal working dilution should be determined for each specific assay condition.

- **IHC:** $\geq 1:40$ (concentrated format) with Biotin based detection systems such as USA Ultra Streptavidin Detection (SIG-32250).

Tissue Sections: Formalin-fixed, paraffin-embedded tissues

Pretreatment: Not required. The BRST-2 epitope is heat-sensitive; paraffin sections that have been heat fixed at 60°C may lose antibody binding sites.

See reverse side for additional information

Page 1 of 2

Incubation: 20-60 minutes at room temperature

Notes:

Positive tissue (human): Axilla or breast carcinoma

Storage:

Store between 2-8

References:

Fan CY, et al. Expression of androgen receptor and prostatic specific markers in salivary duct carcinoma: an immunohistochemical analysis of 13 cases and review of the literature. *Am J Surg Pathol* 24(4):579-586, 2000.

Wick MR, et al. Gross cystic disease fluid protein-15 as a marker for breast cancer: immunohistochemical analysis of 690 human neoplasms and comparison with alpha-lactalbumin. *Human Path* 20(3):281-287, 1989.

Haagensen CD. Disease of the breast. 3rd ed., 250-267. W. B. Saunders Co. Philadelphia, PA, 1986.

Mazoujian, G, et al. Extramammary paget's disease - evidence for an apocrine origin. *Am J. Surg. Pathol.* 8(1):43-50, 1984.

Mazoujian G, et al. Immunohistochemistry of a breast gross cystic disease fluid protein (GCDFP-15): a marker of apocrine epithelium and breast carcinomas with apocrine features. *Am J Pathol* 110:105-111, 1983.

Warranty/Conditions:

These products may be covered by one or more Limited Use Label Licenses (see the BioLegend Catalog or our website, www.biolegend.com/terms). BioLegend products may not be transferred to third parties, resold, modified for resale, or used to manufacture commercial products, reverse engineer functionally similar materials, or to provide a service to third parties without written approval of BioLegend. By use of these products you accept the terms and conditions of all applicable Limited Use Label Licenses. Unless otherwise indicated, these products are for research use only and are not intended for human or animal diagnostic, therapeutic or commercial use.

Datasheet Revision Date:

2014-10-08 00:00:00

Related Products:

HE4 Polyclonal Antibody Catalog Number SIG-3731

BRST-1 (CU-18) Monoclonal Antibody Catalog Number SIG-3610

BRST-3 Monoclonal Antibody, Purified Catalog Number SIG-3612

Breast Cancer Resistance Protein (BXP-21) Monoclonal Antibody Catalog Number SIG-38822

Breast Cancer Resistance Protein (BXP-34) Monoclonal Antibody Catalog Number SIG-38820



EC rep: Cavendish Scott Ltd.,
Invision House, Wilbury Way, Hitchin, Herts,
SG4 0TY ENGLAND