

Anti-C Reactive Protein antibody [Y284] ab32412

 (1568-1)

 6 References |  2 Images

Overview

Product name	Anti-C Reactive Protein antibody [Y284]
Description	Rabbit monoclonal [Y284] to C Reactive Protein
Specificity	ab32412 recognises C Reactive Protein. This antibody is predicted to detect the splice isoform 2.
Tested applications	WB, IP, IHC-P
Species reactivity	Reacts with: Human Does not react with Mouse, Rat
Immunogen	Synthetic peptide (the amino acid sequence is considered to be commercially sensitive) (C terminal)
Epitope	ab32412 reacts with an epitope located in the C terminal region of C Reactive Protein.
Positive control	Human serum and normal human liver tissue.
General notes	Produced under U.S. Patent No. 5,675,063.

Properties

Form	Liquid
Storage instructions	Shipped at 4°C. Upon delivery aliquot and store at -20°C. Avoid freeze / thaw cycles.
Storage buffer	PBS 49%, Sodium azide 0.01%, Glycerol 50%, BSA 0.05%
Purity	Protein A purified
Clonality	Monoclonal
Clone number	Y284
Isotype	IgG
Research Areas	<ul style="list-style-type: none"> › Immunology → Innate Immunity → Macrophage / Inflamm. › Cardiovascular → Blood → Acute Phase Reactants › Immunology → Innate Immunity → Complement → Classical Pathway › Epigenetics and Nuclear Signaling → Chromatin Binding Proteins → DNA / RNA binding › Cardiovascular → Atherosclerosis → Vascular Inflammation → Inflammatory mediators › Cardiovascular → Heart → Apoptosis › Metabolism → Types of disease → Metabolic disorders

Applications

Our [Abpromise guarantee](#) covers the use of **ab32412** in the following tested applications.

The application notes include recommended starting dilutions; optimal dilutions/concentrations should be determined by the end user.

Application	Notes
WB	WB: 1/1000. Predicted molecular weight: 25 kDa.
IP	IP: 1/50.

Target

Function	Displays several functions associated with host defense: it promotes agglutination, bacterial capsular swelling, phagocytosis and complement fixation through its calcium-dependent binding to phosphorylcholine. Can interact with DNA and histones and may scavenge nuclear material released from damaged circulating cells.
Tissue specificity	Found in plasma.
Sequence similarities	Belongs to the pentaxin family. Contains 1 pentaxin domain.
Cellular localization	Secreted.

Target information above from: UniProt accession [P02741](#) The UniProt Consortium

The Universal Protein Resource (UniProt) in 2010

[Nucleic Acids Res. 38:D142-D148 \(2010\)](#).

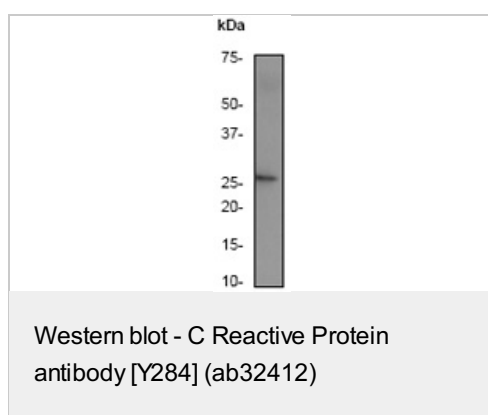
Database links

- [Entrez Gene: 1401 Human](#)
- [Omim: 123260 Human](#)
- [SwissProt: P02741 Human](#)
- [Unigene: 709456 Human](#)
- [Unigene: 76452 Human](#)

Alternative names

C reactive protein antibody
C reactive protein pentraxin related antibody
C-reactive protein(1-205) antibody
CRP antibody
CRP antibody
CRP_HUMAN antibody
MGC88244 antibody
Pentraxin 1 antibody
PTX 1 antibody
PTX1 antibody

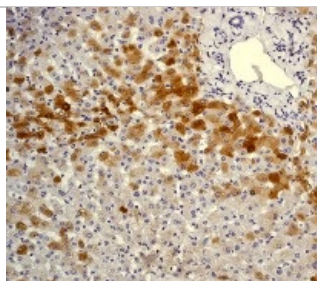
Anti-C Reactive Protein antibody [Y284] images



Anti-C Reactive Protein antibody [Y284]
(ab32412) at 1/1000 dilution + human serum

Predicted band size : 25 kDa

Observed band size : 27 kDa



Immunohistochemistry (Paraffin-embedded sections) - C Reactive Protein antibody [Y284] (ab32412)

Immunohistochemical analysis of paraffin-embedded human normal liver tissue using ab32412 at 1/100 dilution.

Please note: All products are "FOR RESEARCH USE ONLY AND ARE NOT INTENDED FOR DIAGNOSTIC OR THERAPEUTIC USE"

Our Abpromise to you: Quality guaranteed and expert technical support

As standard

- Replacement or refund for products not performing as stated on the datasheet
- Valid for 12 months from date of delivery**
- Response to your inquiry within 24 hours

In addition

- We provide support in Chinese, English, French, German, Japanese and Spanish
- Extensive multi-media technical resources to help you
- We investigate all quality concerns to ensure our products perform to the highest standards

If the product does not perform as described on this datasheet, we will offer a refund or replacement. For full details of the Abpromise, please visit <http://www.abcam.com/abpromise> or contact our technical team.

Terms and conditions

- Guarantee only valid for products bought direct from Abcam or one of our authorized distributors
- **Regional variations to our Abpromise may apply to the following countries: China, Korea, Singapore, Malaysia, Taiwan and Thailand, which operate a 120 day guarantee. Please contact your regional office for further details
- Antibodies tested only in recombinant samples are not covered for use on endogenous samples. Please check the datasheet for information on tested species
- "Predicted to react" information on datasheets is based on sequence homology and provided for reference only
- "Predicted to react" species are not guaranteed, as they have not been tested
- Fast Track products are not covered under the Abpromise. Please see Fast Track terms and condition for additional information
- Abcam biochemicals are novel compounds and we have not tested their biological activity in house. Please use the literature to identify how to use these products effectively. If you require further assistance please contact the scientific support team



Cambridge Office

Abcam plc
330 Cambridge Science Park Cambridge CB4 0FL UK
Tel: +44 (0)1223 696000
Fax: +44 (0)1223 215 215
Email: orders@abcam.com

Boston Office

Abcam Inc.
1 Kendall Square, Suite B2304 Cambridge, MA 02139-1517 USA
Tel: (888) 77-ABCAM (22226)
Fax: (877) 774-8286
These numbers are toll free in the US/Canada
Email: us.orders@abcam.com

Visit us at: www.abcam.com