

# Product Datasheet

## **PRAME Antibody** **NBP1-85418**

Unit Size: 0.1 ml

Store at 4C short term. Aliquot and store at -20C long term. Avoid freeze-thaw cycles.

[www.novusbio.com](http://www.novusbio.com)



[support@novusbio.com](mailto:support@novusbio.com)

Protocols, Publications, Related Products, Reviews, Research Tools and Images at:  
[www.novusbio.com/NBP1-85418](http://www.novusbio.com/NBP1-85418)

Updated 6/15/2014 v.20.1

**NBP1-85418**

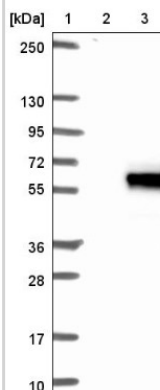
PRAME Antibody

Product Information	
Unit Size	0.1 ml
Concentration	Concentrations vary lot to lot. See vial label for concentration. If unlisted please contact technical services.
Storage	Store at 4C short term. Aliquot and store at -20C long term. Avoid freeze-thaw cycles.
Clonality	Polyclonal
Preservative	0.02% Sodium Azide
Isotype	IgG
Purity	Immunogen affinity purified
Buffer	PBS, pH 7.2, containing 40% glycerol
Product Description	
Host	Rabbit
Gene ID	23532
Gene Symbol	PRAME
Species	Human
Species Reactivity	Human. Expected to cross react based on sequence identity: Mouse (55%), Rat (55%)
Specificity/Sensitivity	Specificity of antibody verified on a Protein Array containing target protein plus 383 other non-specific proteins.
Immunogen	This antibody was developed against Recombinant Protein corresponding to amino acids: LLLSHIHASSYISPEKEEQYIAQFTSQFLSLQCLQALYVDSLFFLRGRDLQQLRHVMNPLETSLITNCRLSEGDVMHLSQSPSVLSVLSLSGVMLTDVSPEPLQALLERASATLQDLVFDECGI
Product Application Details	
Applications	Western Blot, Immunohistochemistry, Immunohistochemistry-Paraffin
Recommended Dilutions	Immunohistochemistry 1:10-1:500, Immunohistochemistry-Paraffin 1:200-1:500, Western Blot 1:100-1:250
Application Notes	For IHC-Paraffin, HIER pH 6 retrieval is recommended.

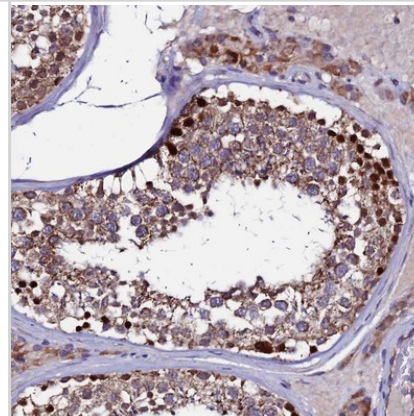


## Images

Western Blot: PRAME Antibody [NBP1-85418] - Lane 1: Marker [kDa] 250, 130, 95, 72, 55, 36, 28, 17, 10  
Lane 2: Negative control (vector only transfected HEK293T lysate)  
Lane 3: Over-expression lysate (Co-expressed with a C-terminal myc-DDK tag (~3.1 kDa) in mammalian HEK293T cells, LY401847)



Immunohistochemistry-Paraffin: PRAME Antibody [NBP1-85418] - Staining of human testis shows strong cytoplasmic and membranous positivity in cells in seminiferous ducts.





### **Novus Biologicals USA**

8100 Southpark Way, A-8  
Littleton, CO 80120  
USA  
Phone: 303.730.1950  
Toll Free: 1.888.506.6887  
Fax: 303.730.1966  
novus@novusbio.com

### **Novus Biologicals Canada**

461 North Service Road West, Unit B37  
Oakville, ON L6M 2V5  
Canada  
Phone: 905.827.6400  
Toll Free: 855.668.8722  
Fax: 905.827.6402  
canada@novusbio.com

### **Novus Biologicals Europe**

12 Cambridge Science Park  
Cambridge, CB4 0FQ  
United Kingdom  
Phone: +44 (0)1223 426001  
Fax: +44 (0)871 971 1635  
europe@novusbio.com

### **General Contact Information**

www.novusbio.com  
Technical Support: technical@novusbio.com  
Orders: orders@novusbio.com  
General: novus@novusbio.com

### **Products Related to NBP1-85418**

---

NBP2-05158	CTAG2 Overexpression Lysate (Native)
NB810-56910	Rabbit IgG Isotype Control
H00023532-P01-10ug	PRAME Recombinant Protein
NB730-H	Goat anti-Rabbit IgG Antibody [HRP]

---

### **Limitations**

This product is for research use only and is not approved for use in humans or in clinical diagnosis. Primary Antibodies are guaranteed for 1 year from date of receipt.

**For more information on our guarantee, please visit [www.novusbio.com/guarantee](http://www.novusbio.com/guarantee).**

