

MDM2 Antibody (IF2)

Product data sheet

| Tested Species Reactivity | | Details | |
|----------------------------|-----------------|----------------|--|
| Rats (Rattus) | | Catalog Number | 33-7100 |
| Human (Hs) | | Size | 50µg |
| Mouse (Mm) | | Class | Monoclonal |
| | | Type | Antibody |
| | | Clone | IF2 |
| | | Host/Isotope | [Mm] Mouse / IgG2b, kappa |
| | | Immunogen | Synthetic peptide derived from the n-terminal region of human MDM2 |
| Tested Applications | | Dilution * | |
| Immunofluorescence (IF) | Assay Dependent | | |
| Immunohistochemistry (IHC) | Assay Dependent | | |
| Immunoprecipitation (IP) | Assay Dependent | | |
| Western Blot (WB) | Assay Dependent | | |

| Form information | |
|--------------------|-------------------|
| Form | Liquid |
| Concentration | 0.5 mg/ml |
| Purification | Protein A |
| Storage buffer | PBS, pH 7.4 |
| Preservative | 0.1% sodium azide |
| Storage Conditions | -20°C |

* Suggested working dilutions are given as a guide only. It is recommended that the user titrate the product for use in their own experiment using appropriate negative and positive controls.

Gene/target

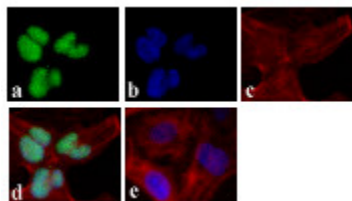
MDM2 is a target of the transcription factor tumor protein p53. The encoded protein is a nuclear phosphoprotein that binds and inhibits transactivation by tumor protein p53, as part of an autoregulatory negative feedback loop. Overexpression of MDM2 can result in excessive inactivation of tumor protein p53, diminishing its tumor suppressor function. This protein has E3 ubiquitin ligase activity, which targets tumor protein p53 for proteasomal degradation. This protein also affects the cell cycle, apoptosis, and tumorigenesis through interactions with other proteins, including retinoblastoma 1 and ribosomal protein L5.

For Research Use Only. Not for use in diagnostic procedures. Not for resale without express authorization.

Products are warranted to operate or perform substantially in conformance with published Product specifications in effect at the time of sale, as set forth in the Production documentation, specifications and/or accompanying package inserts ("Documentation"). No claim of suitability for use in applications regulated by FDA is made. The warranty provided herein is valid only when used by properly trained individuals. Unless otherwise stated in the Documentation, this warranty is limited to one year from date of shipment when the Product is subjected to normal, proper and intended usage. This warranty does not extend to anyone other than the Buyer. Any model or sample furnished to Buyer is merely illustrative of the general type and quality of goods and does not represent that any Product will conform to such model or sample.

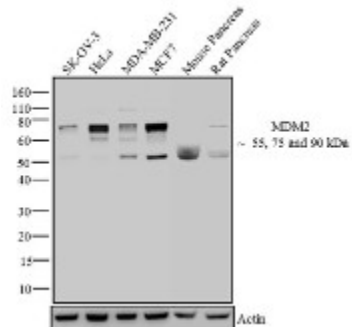
NO OTHER WARRANTIES, EXPRESS OR IMPLIED, ARE GRANTED INCLUDING WITHOUT LIMITATION, IMPLIED WARRANTIES OF MERCHANTABILITY, FITNESS FOR ANY PARTICULAR PURPOSE, OR NON-INFRINGEMENT. BUYER'S EXCLUSIVE REMEDY FOR NON-CONFORMING PRODUCTS DURING THE WARRANTY PERIOD IS LIMITED TO REPAIR, REPLACEMENT OF OR REFUND FOR THE NON-CONFORMING PRODUCT(S) AT SELLER'S SOLE OPTION. THERE IS NO OBLIGATION TO REPAIR, REPLACE OR REFUND FOR PRODUCTS AS THE RESULT OF (I) ACCIDENT, DISASTER OR EVENT OF FORCE MAJEURE, (II) MISUSE, FAULT OR NEGLIGENCE OF OR BY BUYER, (III) USE OF THE PRODUCTS IN A MANNER FOR WHICH THEY WERE NOT DESIGNED, OR (IV) IMPROPER STORAGE AND HANDLING OF THE PRODUCTS. Unless otherwise expressly stated on the Product or in the documentation accompanying the Product, the Product is intended for research only and is not to be used for any other purpose, including without limitation, unauthorized commercial uses, in vitro diagnostic uses, ex vivo or in vivo therapeutic uses, or any type of consumption by or application to human or animals.

MDM2 Antibody (33-7100) in IF



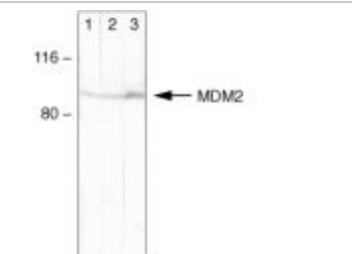
Immunofluorescence analysis of MDM2 was done on 70% confluent log phase U2OS cells. The cells were fixed with 4% paraformaldehyde for 15 minutes, permeabilized with 0.25% Triton™ X-100 for 10 minutes, and blocked with 5% BSA for 1 hour at room temperature. The cells were labeled with MDM2 Mouse Monoclonal Antibody (337100) at 1.5 µg/mL and incubated for 3 hours at room temperature and then labeled with Alexa Fluor 488 Rabbit Anti-Mouse IgG Secondary Antibody (A11059) at a dilution of 1:400 for 30 minutes at room temperature (Panel a: green). Nuclei (Panel b: blue) were stained with SlowFade® Gold Antifade Mountant with DAPI (S36938). F-actin (Panel c: red) was stained with Alexa Fluor 594 Phalloidin (A12381). Panel d is a merged image showing nuclear localization. Panel e shows no primary antibody control. The images were captured at 20X magnification.

MDM2 Antibody (33-7100) in WB



Western blot analysis of MDM2 was performed by loading 30 µg of SK-OV-3 (lane1), HeLa (lane2), MDA-MB-231 (lane3), MCF7 (lane4), Mouse Pancreas (lane5) and Rat Pancreas (lane6) lysate using NuPAGE® Novex® 4-12% Bis-Tris gel (NP0321BOX), XCell SureLock™ Electrophoresis System (EI0002), Novex® Sharp Pre-Stained Protein Standard (LC5800), and iBlot® Dry Blotting System (IB21001). Proteins were transferred to a nitrocellulose membrane and blocked with 5% skim milk for 1 hour at room temperature. MDM2 was detected at ~55, 75 and 90 kDa using MDM2 Mouse Monoclonal Antibody (337100) at 2-3 µg/mL in 2.5% skim milk at 4°C overnight on a rocking platform. Goat Anti-Mouse - HRP Secondary Antibody (626520) at 1:4000 dilution was used and chemiluminescent detection was performed using Novex® ECL Chemiluminescent Substrate Reagent Kit (WP20005). Bands at 75 and 90 kDa are two migratory isoforms reported for MDM2. The truncated 50 kDa MDM2 isoform [p50(MDM2)] has been studied and has been suggested to play a role in protecting p21 from proteasomal degradation.

MDM2 Antibody (33-7100) in WB



Western blot analysis of HeLa cells using Ms anti-MDM2 (Cat. no. 33-7100). Lane 1: 0.5 µg/mL. Lane 2: 1 µg/mL. Lane 3: 3 µg/mL.

Western blot analysis of HeLa cells using Ms anti-MDM2 (Cat. no. 33-7100)
Lane 1: 0.5 µg/mL
Lane 2: 1 µg/mL
Lane 3: 3 µg/mL

For Research Use Only. Not for use in diagnostic procedures. Not for resale without express authorization.

Products are warranted to operate or perform substantially in conformance with published Product specifications in effect at the time of sale, as set forth in the Production documentation, specifications and/or accompanying package inserts ("Documentation"). No claim of suitability for use in applications regulated by FDA is made. The warranty provided herein is valid only when used by properly trained individuals. Unless otherwise stated in the Documentation, this warranty is limited to one year from date of shipment when the Product is subjected to normal, proper and intended usage. This warranty does not extend to anyone other than the Buyer. Any model or sample furnished to Buyer is merely illustrative of the general type and quality of goods and does not represent that any Product will conform to such model or sample.

NO OTHER WARRANTIES, EXPRESS OR IMPLIED, ARE GRANTED INCLUDING WITHOUT LIMITATION, IMPLIED WARRANTIES OF MERCHANTABILITY, FITNESS FOR ANY PARTICULAR PURPOSE, OR NON-INFRINGEMENT. BUYER'S EXCLUSIVE REMEDY FOR NON-CONFORMING PRODUCTS DURING THE WARRANTY PERIOD IS LIMITED TO REPAIR, REPLACEMENT OF OR REFUND FOR THE NON-CONFORMING PRODUCT(S) AT SELLER'S SOLE OPTION. THERE IS NO OBLIGATION TO REPAIR, REPLACE OR REFUND FOR PRODUCTS AS THE RESULT OF (i) ACCIDENT, DISASTER OR EVENT OF FORCE MAJEURE, (ii) MISUSE, FAULT OR NEGLIGENCE OF OR BY BUYER, (iii) USE OF THE PRODUCTS IN A MANNER FOR WHICH THEY WERE NOT DESIGNED, OR (iv) IMPROPER STORAGE AND HANDLING OF THE PRODUCTS. Unless otherwise expressly stated on the Product or in the documentation accompanying the Product, the Product is intended for research only and is not to be used for any other purpose, including without limitation, unauthorized commercial uses, in vitro diagnostic uses, ex vivo or in vivo therapeutic uses, or any type of consumption by or application to human or animals.