

Anti-Claudin 5 antibody ab53765

 6 Abreviews |  14 References |  5 Images

Overview

Product name	Anti-Claudin 5 antibody
Description	Rabbit polyclonal to Claudin 5
Specificity	ab53765 detects endogenous levels of total Claudin 5 protein.
Tested applications	WB, ELISA, IHC-P, ICC/IF
Species reactivity	Reacts with: Mouse, Rat, Cow, Human, Pig
Immunogen	Synthetic peptide derived from human Claudin 5.
Positive control	IHC-P: Human brain tissue WB: A549 cell extracts.




Properties

Form	Liquid
Storage instructions	Store at -20°C. Stable for 12 months at -20°C
Storage buffer	Preservative: 0.02% Sodium Azide Constituents: 50% Glycerol, PBS (without Mg ²⁺ and Ca ²⁺), 150mM Sodium chloride, pH 7.4
Purity	Immunogen affinity purified
Purification notes	ab53765 was affinity purified from rabbit antiserum by affinity chromatography using epitope specific immunogen.
Clonality	Polyclonal
Isotype	IgG

Applications

Our [Abpromise guarantee](#) covers the use of **ab53765** in the following tested applications.

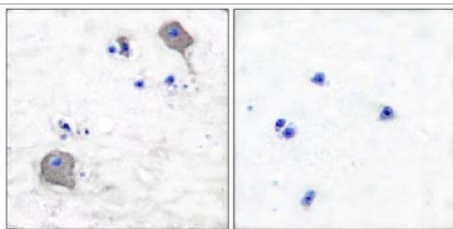
The application notes include recommended starting dilutions; optimal dilutions/concentrations should be determined by the end user.

Application	Abreviews	Notes
WB		1/500 - 1/1000. Detects a band of approximately 23 kDa (predicted molecular weight: 23 kDa).
ELISA		1/40000.
IHC-P		Use at an assay dependent dilution.
ICC/IF		1/100.

Target

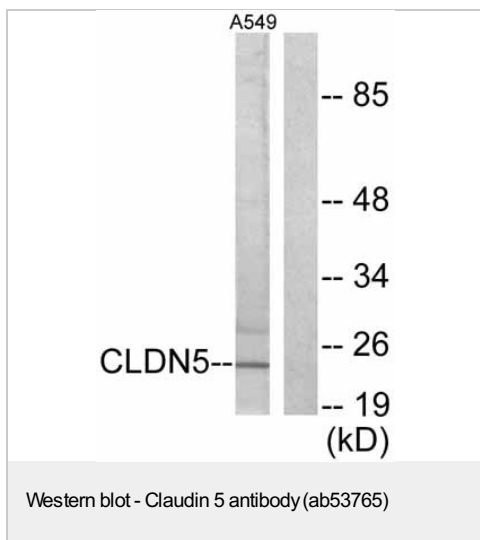
Function	Plays a major role in tight junction-specific obliteration of the intercellular space.
Sequence similarities	Belongs to the claudin family.
Cellular localization	Cell junction > tight junction. Cell membrane.

Anti-Claudin 5 antibody images



ab53765, at 1/50 dilution, staining Claudin 5 in paraffin embedded human brain tissue by Immunohistochemistry in the absence (left image) or presence (right image) of the immunising peptide.

Peptide - +
Immunohistochemistry (Paraffin-embedded sections) - Claudin 5 antibody (ab53765)



All lanes : Anti-Claudin 5 antibody (ab53765) at 1/500 dilution

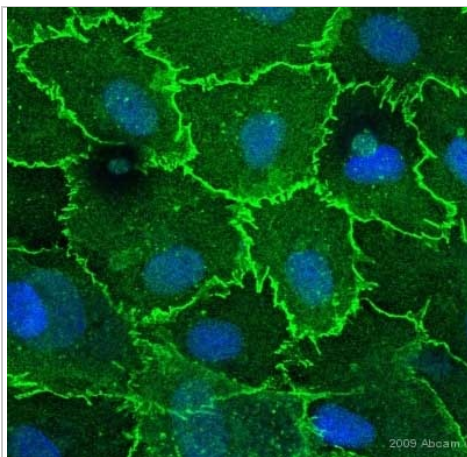
Lane 1 : A549 cell extract

Lane 2 : A549 cell extract with Immunising peptide

Predicted band size : 23 kDa

Observed band size : 23 kDa

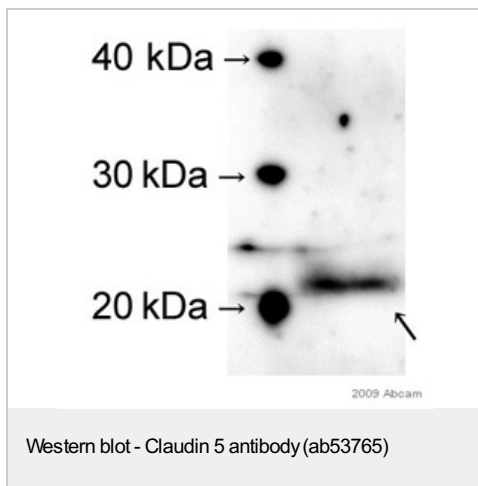
Western blot - Claudin 5 antibody (ab53765)



ab53765 staining Claudin 5 in HUVEC cells by ICC/IF (Immunocytochemistry/immunofluorescence). Cells were fixed with methanol, permeabilized with 0.1% Triton-X and blocked in 0.5% BSA for 15 minutes at room temperature. Samples were incubated with primary antibody, dilution 1/100 (0.5% BSA in PBS), for 1 hour. An FITC-conjugated Goat polyclonal to rabbit IgG, dilution 1/200, was used as secondary antibody.

Immunocytochemistry/ Immunofluorescence - Claudin 5 antibody (ab53765)

This image is courtesy of an anonymous Abreview



All lanes : Anti-Claudin 5 antibody (ab53765) at 1/750 dilution

Lane 1 : Molecular weight marker

Lane 2 : Mouse primary endothelial cell lysate co-cultured with primary astrocytes and pericytes at 20000 cells

Secondary

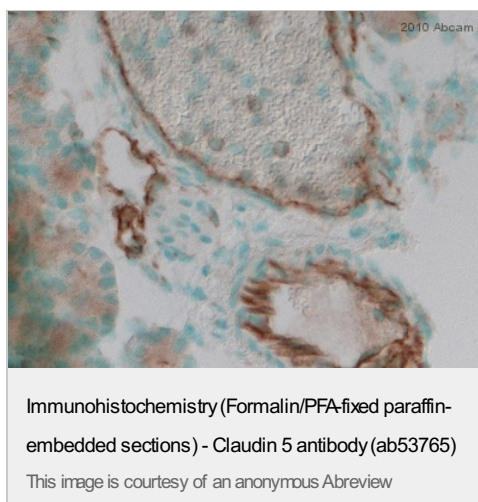
HRP-conjugated Goat polyclonal anti-rabbit IgG at 1/5000 dilution

Performed under reducing conditions.

Predicted band size : 23 kDa

Observed band size : 23 kDa

This image is a courtesy of an anonymous abreview



ab53765 staining Claudin 5 in Mouse blood vessel tissue sections by Immunohistochemistry (IHC-P - paraformaldehyde-fixed, paraffin-embedded sections).

Tissue was fixed with paraformaldehyde and blocked with 20% serum for 30 minutes at 22°C; antigen retrieval was by heat mediation. Samples were incubated with primary antibody (1/5000 in blocking buffer) for 16 hours at 22°C. A Biotin-conjugated Donkey anti-rabbit IgG polyclonal (1/250) was used as the secondary antibody.

Please note: All products are "FOR RESEARCH USE ONLY AND ARE NOT INTENDED FOR DIAGNOSTIC OR THERAPEUTIC USE"

Our Abpromise to you: Quality guaranteed and expert technical support

- Replacement or refund for products not performing as stated on the datasheet
- Valid for 12 months from date of delivery**
- Response to your inquiry within 24 hours
- We provide support in Chinese, English, French, German, Japanese and Spanish
- Extensive multi-media technical resources to help you
- We investigate all quality concerns to ensure our products perform to the highest standards

If the product does not perform as described on this datasheet, we will offer a refund or replacement. For full details of the Abpromise, please visit <http://www.abcam.com/abpromise> or contact our technical team.

Terms and conditions

- Guarantee only valid for products bought direct from Abcam or one of our authorized distributors
- **Regional variations to our Abpromise may apply to the following countries: China, Korea, Singapore, Malaysia, Taiwan and Thailand, which operate a 120 day guarantee. Please contact your regional office for further details

Visit us at: www.abcam.com