

Anti-Smoothelin antibody [R4A] ab8969

 3 Abreviews |  13 References |  3 Images

Overview

Product name	Anti-Smoothelin antibody [R4A]
Description	Mouse monoclonal [R4A] to Smoothelin
Specificity	This antibody reacts with the 59 kDa and 100 kDa protein, corresponding to smoothelin A and B, respectively, which are exclusively found in smooth muscle cells.
Tested applications	ICC/IF, ICC, IHC-Fr, IHC-P, WB
Species reactivity	Reacts with: Chicken, Cat, Dog, Human, Pig, Monkey Does not react with Mouse, Rat, Hamster
Immunogen	Cytoskeletal extract of chicken gizzard.




Properties

Form	Liquid
Storage instructions	Store at +4°C short term (1-2 weeks). Aliquot and store at -20°C or -80°C. Avoid repeated freeze / thaw cycles.
Storage buffer	Preservative: 0.09% Sodium Azide Constituents: PBS
Purity	Protein G purified
Clonality	Monoclonal
Clone number	R4A
Myeloma	Sp2/0-Ag14
Isotype	IgG1

Applications

Our [Abpromise guarantee](#) covers the use of **ab8969** in the following tested applications.

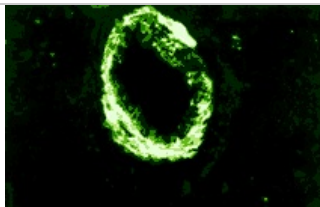
The application notes include recommended starting dilutions; optimal dilutions/concentrations should be determined by the end user.

Application	Abreviews	Notes
ICC/IF		Use at an assay dependent concentration.
ICC		Use at an assay dependent dilution.
IHC-Fr		Use at an assay dependent dilution.
IHC-P		Use at an assay dependent dilution.
WB		1/100 - 1/1000.

Target

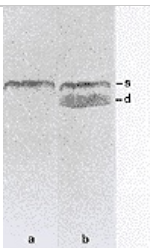
Function	Structural protein of the cytoskeleton.
Tissue specificity	Smooth muscle; contractile or vascular (for the long form).
Sequence similarities	Belongs to the smoothelin family. Contains 1 CH (calponin-homology) domain.
Cellular localization	Cytoplasm > cytoskeleton. Exhibits a filamentous organization.

Anti-Smoothelin antibody [R4A] images



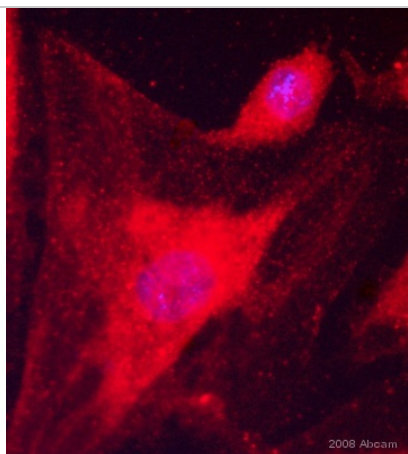
Immunocytochemistry/ Immunofluorescence - Anti-Smoothelin antibody [R4A] (ab8969)

Human blood vessel in cardiac muscle stained with the monoclonal smoothelin antibody ab8969.



Western blot - Smoothelin antibody [R4A] (ab8969)

Immunoblotting of human colon smooth muscle tissue incubated with (a) monoclonal antibody R4A(ab8969) to smoothelin (a), and subsequently incubated with the monoclonal desmin antibody RD301.



Immunocytochemistry/ Immunofluorescence - Smoothelin antibody [R4A] (ab8969)

This image is courtesy of an anonymous Abreview

ab8969 staining cells from a human vascular smooth muscle cells by ICC/IF. Cells were PFA fixed and permeabilized in 0.5% Triton X-100 prior to blocking in 10% serum for 10 minutes at 21°C. The primary antibody was diluted 1/100 and incubated with the sample for 1 hour at 21°C. An Rhodamine conjugated donkey anti-mouse antibody, diluted 1/200, was used as the secondary.

Please note: All products are "FOR RESEARCH USE ONLY AND ARE NOT INTENDED FOR DIAGNOSTIC OR THERAPEUTIC USE"

Our Abpromise to you: Quality guaranteed and expert technical support

- Replacement or refund for products not performing as stated on the datasheet
- Valid for 12 months from date of delivery**
- Response to your inquiry within 24 hours
- We provide support in Chinese, English, French, German, Japanese and Spanish
- Extensive multi-media technical resources to help you
- We investigate all quality concerns to ensure our products perform to the highest standards

If the product does not perform as described on this datasheet, we will offer a refund or replacement. For full details of the Abpromise, please visit <http://www.abcam.com/abpromise> or contact our technical team.

Terms and conditions

- Guarantee only valid for products bought direct from Abcam or one of our authorized distributors

Product Datasheet

- **Regional variations to our Abpromise may apply to the following countries: China, Korea, Singapore, Malaysia, Taiwan and Thailand, which operate a 120 day guarantee. Please contact your regional office for further details

Visit us at: www.abcam.com