

Anti-Pancreatic Lipase antibody [EPR6275]

ab133556



3 Images

Overview

Product name	Anti-Pancreatic Lipase antibody [EPR6275]
Description	Rabbit monoclonal [EPR6275] to Pancreatic Lipase
Tested applications	WB, IHC-P
Species reactivity	Reacts with: Human
Immunogen	Synthetic peptide corresponding to residues in Human Pancreatic Lipase (UniProt ID: P16233).
Positive control	Human pancreas lysate, Human pancreas tissue
General notes	<p>This product is a recombinant rabbit monoclonal antibody.</p> <p>Produced using Abcam's RabMAb[®] technology. RabMAb[®] technology is covered by the following U.S. Patents, No. 5,675,063 and/or 7,429,487.</p> <p>Mouse, Rat: We have preliminary internal testing data to indicate this antibody may not react with these species. Please contact us for more information.</p>

Properties

Form	Liquid
Storage instructions	Shipped at 4°C. Store at -20°C. Stable for 12 months at -20°C.
Storage buffer	<p>pH: 7.40</p> <p>Preservative: 0.01% Sodium azide</p> <p>Constituents: 50% Glycerol, 0.05% BSA</p>
Purity	Tissue culture supernatant
Clonality	Monoclonal
Clone number	EPR6275
Isotype	IgG

Applications

Our [Abpromise guarantee](#) covers the use of **ab133556** in the following tested applications.

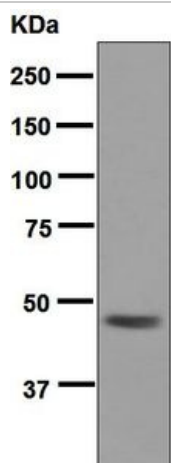
The application notes include recommended starting dilutions; optimal dilutions/concentrations should be determined by the end user.

Application	Abreviews	Notes
WB		1/10000 - 1/50000. Detects a band of approximately 49 kDa (predicted molecular weight: 51 kDa).
IHC-P		1/100 - 1/250. Perform heat mediated antigen retrieval with citrate buffer pH 6 before commencing with IHC staining protocol.
Application notes	Is unsuitable for IP.	

Target

Sequence similarities	Belongs to the AB hydrolase superfamily. Lipase family. Contains 1 PLAT domain.
Cellular localization	Secreted.

Anti-Pancreatic Lipase antibody [EPR6275] images



Western blot - Anti-Pancreatic Lipase antibody [EPR6275] (ab133556)

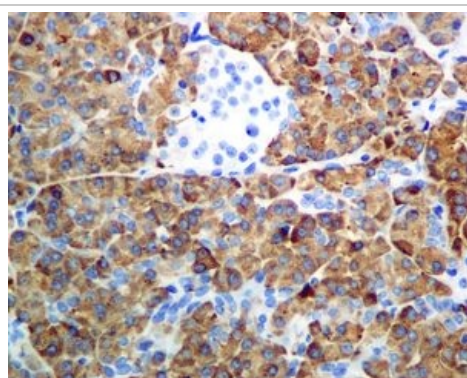
Anti-Pancreatic Lipase antibody[EPR6275] (ab133556) at 1/10000 dilution + Human pancreas lysate at 10 µg

Secondary

HRP labelled goat anti-rabbit at 1/2000 dilution

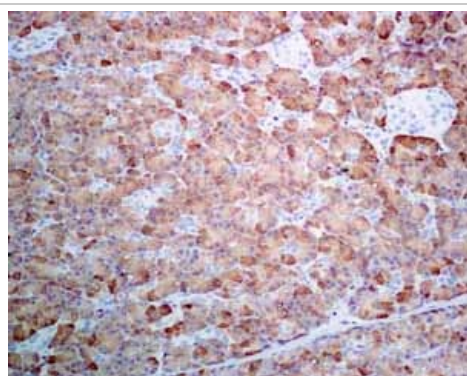
Predicted band size : 51 kDa

Observed band size : 49 kDa



Immunohistochemistry (Formalin/PFA-fixed paraffin-embedded sections) - Anti-Pancreatic Lipase antibody [EPR6275] (ab133556)

Immunohistochemical analysis of paraffin embedded Human pancreas tissue labelling Pancreatic Lipase with ab133556 antibody at a dilution of 1/100.



Immunohistochemistry (Formalin/PFA-fixed paraffin-embedded sections) - Anti-Pancreatic Lipase antibody [EPR6275] (ab133556)

ab133556 showing positive staining in Normal pancreas tissue.

Please note: All products are "FOR RESEARCH USE ONLY AND ARE NOT INTENDED FOR DIAGNOSTIC OR THERAPEUTIC USE"

Our Abpromise to you: Quality guaranteed and expert technical support

- Replacement or refund for products not performing as stated on the datasheet
- Valid for 12 months from date of delivery
- Response to your inquiry within 24 hours

- We provide support in Chinese, English, French, German, Japanese and Spanish
- Extensive multi-media technical resources to help you
- We investigate all quality concerns to ensure our products perform to the highest standards

If the product does not perform as described on this datasheet, we will offer a refund or replacement. For full details of the Abpromise, please visit <http://www.abcam.com/abpromise> or contact our technical team.

Terms and conditions

- Guarantee only valid for products bought direct from Abcam or one of our authorized distributors

Visit us at: www.abcam.com