

Anti-Pancreatic Amylase antibody ab21156

★★★★★ 3 Abreviews | 1 Image

Overview

Product name	Anti-Pancreatic Amylase antibody
Description	Rabbit polyclonal to Pancreatic Amylase
Specificity	Cross-reactivity against other forms of amylase has not been determined.
Tested applications	WB, IHC-P
Species reactivity	Reacts with: Mouse, Human
Immunogen	Full length protein (purified) (Human)
Positive control	This antibody gave a positive result in IHC in the following FFPE tissue: Human normal pancreas

Properties

Form	Liquid
Storage instructions	Shipped at 4°C. Upon delivery aliquot and store at -20°C. Avoid freeze / thaw cycles.
Storage buffer	Preservative: 0.1% Sodium Azide Constituents: PBS
Purity	IgG fraction
Purification notes	Ammonium sulfate precipitation. Single arc by IEP against pancreatic extract. Single arc by IEP against antigen.
Clonality	Polyclonal
Isotype	IgG

Applications

Our [Abpromise guarantee](#) covers the use of **ab21156** in the following tested applications.

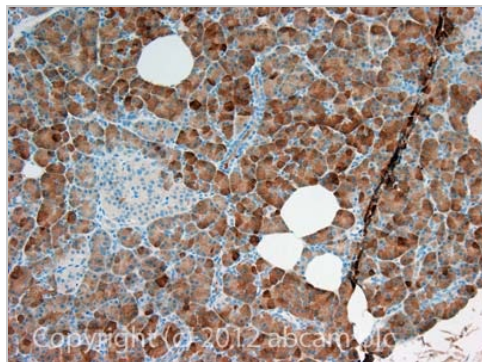
The application notes include recommended starting dilutions; optimal dilutions/concentrations should be determined by the end user.

Application	Abreviews	Notes
WB	★★★★★	1/8000. Predicted molecular weight: 57 kDa. Strong reaction to 0.15ug and 0.3ug antigen detected. Predicted molecular weight: 57 kDa. Dilution optimised using Chromogenic detection.
IHC-P	★★★★★	1/400. Perform heat mediated antigen retrieval with citrate buffer pH 6 before commencing with IHC staining protocol.

Target

Relevance	Pancreatic amylase is a digestive enzyme secreted by the pancreas. It consists of a single polypeptide chain with a molecular weight of 54 kDa. Pancreatic amylase occurs in serum at a concentration of about 60µg/L, from a total amylase concentration in serum of about 120µg/L. Pancreatic amylase and salivary amylase are the products of separate genes and, although they share 98% amino acid sequence homology, they differ in molecular size, isoelectric point and antigenic properties. Measurement of amylase concentrations in serum is a diagnostic test for various pancreatic disorders (especially acute and relapsing pancreatitis).
Cellular localization	Secreted protein; extracellular space.

Anti-Pancreatic Amylase antibody images



Immunohistochemistry (Formalin/PFA-fixed paraffin-embedded sections) - Anti-Pancreatic Amylase antibody (ab21156)

IHC image of Pancreatic Amylase staining in Human pancreas normal formalin fixed paraffin embedded tissue section, performed on a Leica Bond™ system using the standard protocol F. The section was pre-treated using heat mediated antigen retrieval with sodium citrate buffer (pH6, epitope retrieval solution 1) for 20 mins. The section was then incubated with ab21156, 5µg/ml, for 15 mins at room temperature and detected using an HRP conjugated compact polymer system. DAB was used as the chromogen. The section was then counterstained with haematoxylin and mounted with DPX.

For other IHC staining systems (automated and non-automated) customers should optimize variable parameters such as antigen retrieval conditions, primary antibody concentration and antibody incubation times.

Please note: All products are "FOR RESEARCH USE ONLY AND ARE NOT INTENDED FOR DIAGNOSTIC OR THERAPEUTIC USE"

Our Abpromise to you: Quality guaranteed and expert technical support

- Replacement or refund for products not performing as stated on the datasheet
- Valid for 12 months from date of delivery**
- Response to your inquiry within 24 hours
- We provide support in Chinese, English, French, German, Japanese and Spanish
- Extensive multi-media technical resources to help you
- We investigate all quality concerns to ensure our products perform to the highest standards

If the product does not perform as described on this datasheet, we will offer a refund or replacement. For full details of the Abpromise, please visit <http://www.abcam.com/abpromise> or contact our technical team.

Terms and conditions

- Guarantee only valid for products bought direct from Abcam or one of our authorized distributors
- **Regional variations to our Abpromise may apply to the following countries: China, Korea, Singapore, Malaysia, Taiwan and Thailand, which operate a 120 day guarantee. Please contact your regional office for further details

Visit us at: www.abcam.com