

Cyclin D1 / bcl-1

Rabbit Polyclonal Antibody

Cat. #RB-9041-P0, -P1, or -P (0.1ml, 0.5ml, or 1.0ml at 200µg/ml) (Purified Ab with BSA and Azide)

Cat. #RB-9041-R7 (7.0ml) (Ready-to-Use for Immunohistochemical Staining)

Please note this data sheet has been changed effective Apr 10, 2009

Description:

Cyclin D1 or PRAD-1 or bcl-1 is one of the key cell cycle regulators, and functions in association with cdk4 and / or cdk6 by phosphorylating the Rb protein. It is a putative proto-oncogene overexpressed in a wide variety of human neoplasms including mantle cell lymphomas (MCL).

Comments: This antibody is excellent for staining of formalin-fixed, paraffin-embedded tissues.

Mol. Wt. of Antigen: 36kDa

Epitope: C-terminal

Species Reactivity: Human, Mouse and Rat. Others not tested.

Immunogen:

A synthetic peptide from C-terminus of human cyclin D1

Applications and Suggested Dilutions:

- Western Blotting (Ab 1µg/ml for 2 hours at RT)
- Immunoprecipitation
- Immunohistology (Formalin/paraffin)

(Ab 1:200 for 60 min at RT with LV's UltraVision LP Systems)

- [Staining of formalin-fixed tissues requires boiling tissue sections in 10mM citrate buffer, pH 6.0 for 10-20 min followed by cooling at RT for 20 min.]

The optimal dilution for a specific application should be determined by the investigator.

Positive Control: Breast carcinoma or mantle cell lymphoma.

Cellular Localization: Nuclear

Storage and Stability:

Store vial at 4°C. When stored at 2-8°C, this antibody is stable for 24 months.

Supplied As: Antibody fraction purified from rabbit anti-serum. Prepared in 10mM PBS, pH 7.6, with 0.2% BSA and 15mM sodium azide.

or

Prediluted antibody which is ready-to-use for immunohistochemical staining.

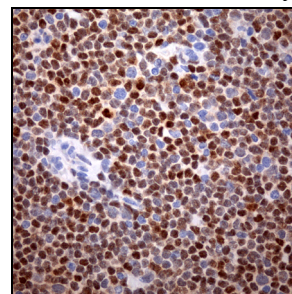
Limitations and Warranty:

Our products are intended FOR RESEARCH USE ONLY and are not approved for clinical diagnosis, drug use or therapeutic procedures. No products are to be construed as a recommendation for use in violation of any patents. We make no representations, warranties or assurances as to the accuracy or completeness of information provided on our data sheets and website. Our warranty is limited to the actual price paid for the product. NeoMarkers is not liable for any property damage, personal injury, time or effort or economic loss caused by our products.

Material Safety Data:

This product is not licensed or approved for administration to humans or to animals other than the experimental animals. Standard Laboratory Practices should be followed when handling this material. The chemical, physical, and toxicological properties of this material have not been thoroughly investigated. Appropriate measures should be taken to avoid skin and eye contact, inhalation, and ingestion. The material contains 0.09% sodium azide as a preservative. Although the quantity of azide is very small, appropriate care should be taken when handling this material as indicated above. The National Institute of Occupational Safety and Health has issued a bulletin citing the potential explosion hazard due to the reaction of sodium azide with copper, lead, brass, or solder in the plumbing systems. Sodium azide forms hydrazoic acid in acidic conditions and deposits forming in metal drainage pipes.

For Research Use Only



Human mantle cell lymphoma stained with Anti-Cyclin D1, Cat# RB-9041-P

