


Anti-CXorf20 antibody

Key facts

Isotype	IgG
Host species	Rabbit
Storage buffer	pH: 7.2 Preservative: 0.02% Sodium azide Constituents: 59% PBS, 40% Glycerol (glycerin, glycerine)
Form	Liquid
Clonality	Polyclonal
Immunogen	Recombinant Fragment Protein within Human BEND2 aa 400-600. The exact immunogen used to generate this antibody is proprietary information. Database link Q8NDZ0 
Purification technique	Affinity purification Immunogen
Concentration	0.05 - 0.1 mg/mL The concentration of this product may be batch-dependent Batch concentration finder →

Reactivity data

IHC-P

Tested

Species	Human
Dilution info	1/50.00000 - 1/200.00000
Notes	Perform heat-mediated antigen retrieval with citrate buffer pH 6 before commencing with IHC staining protocol.

WB

Tested

Species	Human
Dilution info	0.04000-0.40000 µg/mL
Notes	-

Target data

[See full target information BEND2](#) 

Storage

Shipped at conditions	Blue Ice
Appropriate short-term storage duration	1-2 weeks
Appropriate short-term storage conditions	+4°C
Appropriate long-term storage conditions	-20°C
Aliquoting information	Upon delivery aliquot
Storage information	Avoid freeze / thaw cycle

Notes

Abcam is leading the way to address reproducibility in scientific research with our highly validated recombinant monoclonal and recombinant multiclonal antibodies. Search & select one of Abcam's thousands of recombinant alternatives to eliminate batch-variability and unnecessary animal use.

If you do not find a host species to meet your needs, our catalogue and custom Chimeric range provides scientists the specificity of Abcam's RabMAbs in the species backbone of your choice. Remember to also review our range of edited cell lines, proteins and biochemicals relevant to your target that may help you further your research goals.

Abcam antibodies are extensively validated in a wide range of species and applications, so please check the reagent specifications meet your scientific needs before purchasing. If you have any questions or bespoke requirements, simply visit the Contact Us page to send us an inquiry or contact our Support Team ahead of purchase.

Supplementary info

This supplementary information is collated from multiple sources and compiled automatically.

Activity summary

CXorf20 also known as "Chromosome X Open Reading Frame 20" is a protein coded by a gene located on the X chromosome. It has a mass of approximately 30 kDa. Researchers have observed its expression in various tissues including the brain testis and muscle. Though its exact mechanical function remains not entirely understood CXorf20 is believed to participate in cellular processes due to its presence in these diverse tissues.

Biological function summary

Researchers believe CXorf20 plays an important role in neuronal development although it has not yet been fully elucidated. The protein does not seem to be part of any characterized complex but its expression pattern implies a function related to cellular differentiation and specialized tissue formation. The varying tissue expression indicates CXorf20 may contribute to the regulation of genes involved in cognitive and muscular functions.

Pathways

CXorf20 shows some connectivity within transcriptional regulatory networks. Although specific pathways involving CXorf20 are not yet completely mapped interactions with proteins such as NF-kB and AP-1 suggest a role in signaling pathways that govern immune response and cell growth. Investigating these pathways may unravel more about its function in cellular processes.

Associated diseases and disorders

Researchers have been exploring CXorf20's potential link to neurodevelopmental conditions like autism spectrum disorders and muscular dystrophies. Its association with X-linked genes like MECP2 which is implicated in Rett syndrome shows that CXorf20 could influence neural pathologies. These connections suggest that further study may reveal novel insights into these diseases' molecular underpinnings.

Product promise

Tested

We have tested this species and application combination and it works. It is covered by our product promise.

Expected

We have not tested this specific species and application combination in-house, but expect it will work. It is covered by our product promise.

Predicted

This species and application combination has not been tested, but we predict it will work based on strong homology. However, this combination is not covered by our product promise.

Not recommended

We do not recommend this combination. It is not covered by our product promise.

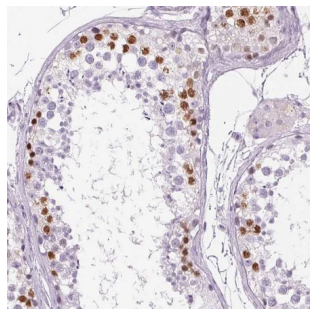
We are dedicated to supporting your work with high quality reagents and we are here for you every step of the way should you need us.

In the unlikely event of one of our products not working as expected, you are covered by our product promise.

Full details and terms and conditions can be found here:

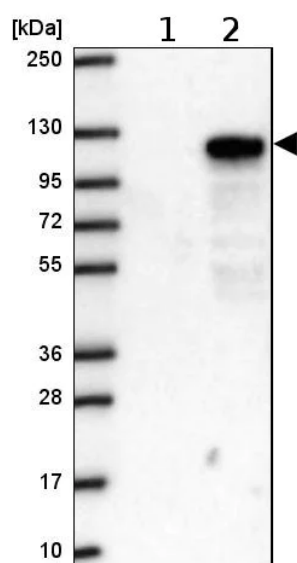
[Terms & Conditions.](#)

2 product images



Immunohistochemistry (Formalin/PFA-fixed paraffin-embedded sections) - Anti-CXorf20 antibody (ab204795)

Immunohistochemical analysis of paraffin-embedded Human testis tissue labeling CXorf20 with ab204795 at 1/50 dilution.



Western blot - Anti-CXorf20 antibody (ab204795)

All lanes:

Western blot - Anti-CXorf20 antibody (ab204795) at 1/100 dilution

Lane 1:

Negative control

Lane 2:

CXorf20 overexpression HEK293T lysate

Predicted band size: 70 kDa, 88 kDa

Please note: All products are 'FOR RESEARCH USE ONLY. NOT FOR USE IN DIAGNOSTIC OR THERAPEUTIC PROCEDURES'.