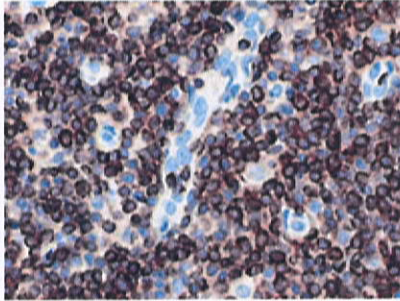




## CONFIRM bcl-2



<b>Catalog Number:</b>	790-4464
<b>Quantity:</b>	50 tests
<b>Controls:</b>	Interfollicular T Cells in Tonsil, B Cells of the Mantle Zone
<b>Isotypes:</b>	IgG <sub>1</sub>
<b>Clone Name:</b>	124
<b>Species:</b>	Mouse
<b>Localization:</b>	Cytoplasmic
<b>Regulatory Status:</b>	IVD

CONFIRM anti-bcl-2 (124) Mouse Monoclonal Primary Antibody is directed against human bcl-2 expressed by B cells of the mantle zone and interfollicular T cells. This antibody exhibits a cytoplasmic staining pattern and may be used to aid in the identification of follicular lymphomas and diffuse large cell lymphomas, and to differentiate follicular lymphomas from reactive lymph nodes.

### References

1. Chao DT, et al., Annu Rev Immunol. 16:395-419, 1998.
2. Pezzella F, et al., N Engl J Med. 329:690-4, 1993.
3. Campos L, et al., Blood. 81:3091-6, 1993.

### Related Links

- [bcl-2 MSDS](#)
- [Package Inserts](#)

© 2010 Ventana Medical Systems, Inc. [Terms and Conditions](#) [Privacy Policy](#) 19.07.2010

This website contains information on products which is targeted to a wide range of audiences and could contain product details or information otherwise not accessible or valid in your country. Please be aware that we do not take any responsibility for accessing such information which may not comply with any legal process, regulation, registration or usage in the country of your origin.