

SARS-CoV / SARS-CoV-2 (COVID-19) spike antibody [1A9]

Cat No. GTX632604

Host	Mouse
Clonality	Monoclonal
Isotype	IgG1
Application	WB, ICC/IF, IHC-P, FACS, IP, ELISA, Sandwich ELISA, IHC-P (cell pellet)
Reactivity	SARS Coronavirus, SARS Coronavirus 2

Reference (25)

★★★★★ Review (9)

Package

100 µl, 25 µl

APPLICATION

Application Note

*Optimal dilutions/concentrations should be determined by the researcher.

Suggested dilution	Dilution
WB	1:500-1:3000
ICC/IF	1:100-1:2000
IHC-P	Assay dependent
FACS	Assay dependent
IP	Assay dependent
ELISA	Assay dependent
Sandwich ELISA	Assay dependent
IHC-P (cell pellet)	Assay dependent

Note : Capture : GTX632604, Detection: GTX635654/GTX135356/GTX635672/GTX135386/GTX135360

Not tested in other applications.

Specificity/Sensitivity

This antibody detects both SARS-CoV spike and SARS-CoV-2 spike proteins (S2 subunit). Our internal testing indicates no cross-reactivity with MERS-CoV spike protein.

PROPERTIES

Form	Liquid
Buffer	PBS
Storage	Store as concentrated solution. Centrifuge briefly prior to opening vial. For short-term storage (1-2 weeks), store at 4°C. For long-term storage, aliquot and store at -20°C or below. Avoid multiple freeze-thaw cycles.
Concentration	1 mg/ml (Please refer to the vial label for the specific concentration.)
Immunogen	The immunogen used to generate this antibody corresponds to SARS-CoV SΔ10 (within S2 domain) protein (1029-1192 a.a.).

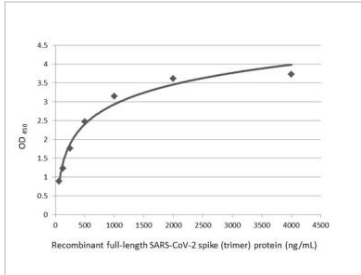


For full product information, images and publications, please visit our [website](#).

Date 2020 / 11 / 12 Page 1 of 2

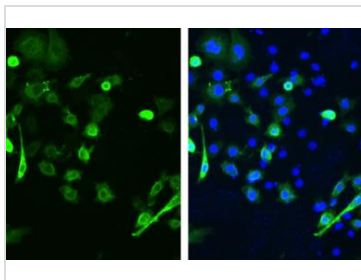
Purification	Affinity purified by Protein G.
Conjugation	Unconjugated
Note	For laboratory use only. Not for any clinical, therapeutic, or diagnostic use in humans or animals. Not for animal or human consumption.

DATA IMAGES



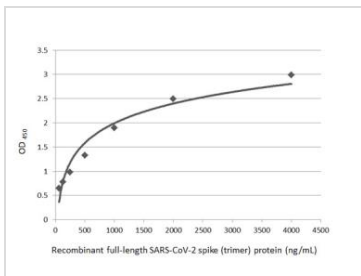
GTX632604 ELISA Image

Sandwich ELISA detection of recombinant full-length SARS-CoV-2 spike (trimer) protein using GTX632604 as capture antibody at concentration of 5 µg/mL and GTX635654 as detection antibody at concentration of 1 µg/mL. Rabbit IgG antibody (HRP) (GTX213110-01) was diluted at 1:10000 and used to detect the primary antibody.



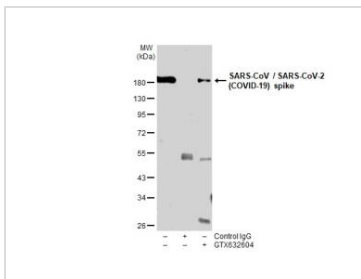
GTX632604 ICC/IF Image

SARS-CoV / SARS-CoV-2 (COVID-19) spike antibody [1A9] detects SARS-CoV-2 (COVID-19) spike protein by immunofluorescent analysis.
 Sample: BHK-21 cells transfected with full-length SARS-CoV-2 spike were fixed in 4% paraformaldehyde at RT for 30 min.
 Green: SARS-CoV-2 (COVID-19) spike stained by SARS-CoV / SARS-CoV-2 (COVID-19) spike antibody [1A9] (GTX632604) diluted at 1:2000.



GTX632604 ELISA Image

Sandwich ELISA detection of recombinant full-length SARS-CoV-2 spike (trimer) protein using GTX632604 as capture antibody at concentration of 5 µg/mL and GTX635672 as detection antibody at concentration of 1 µg/mL. Rabbit IgG antibody (HRP) (GTX213110-01) was diluted at 1:10000 and used to detect the primary antibody.



GTX632604 IP Image

Immunoprecipitation of SARS-CoV-2 Spike transfected 293T whole cell extracts using 2 µg of SARS-CoV / SARS-CoV-2 (COVID-19) spike antibody [1A9] (GTX632604).
 Western blot analysis was performed using SARS-CoV / SARS-CoV-2 (COVID-19) spike antibody [1A9] (GTX632604).
 EasyBlot HRP-conjugated anti mouse IgG antibody (GTX221667-01) was used to detect the primary antibody.



For full product information, images and publications, please visit our [website](#).