



HPA018446 Sigma-Aldrich

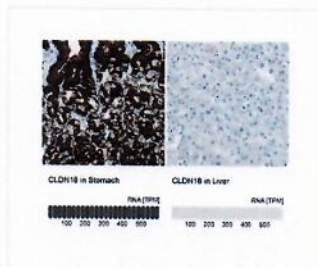
Anti-CLDN18 antibody produced in rabbit



Prestige Antibodies® Powered by Atlas Antibodies, affinity isolated antibody, buffered aqueous glycerol solution

Synonym: Anti-SFTPJ

Human Protein Atlas Number HPA018446 [Human Protein Atlas - View RNA & protein expression data of this target](#)

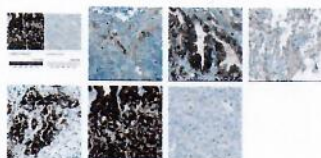


SDS Certificate of Analysis (COA)

SKU-Pack Size	Availability	Pack Size	Price (CZK)	Quantity
HPA018446-25UL	Only 1 left in stock (more on the way) - FROM	25 µL	4,300.00	0
HPA018446-100UL	Only 1 left in stock (more on the way) - FROM	100 µL	10,900.00	0

[Bulk orders?](#)

[ADD TO CART](#)



Product Recommendations

HPA046875
Sigma-Aldrich
Anti-PGA3 antibody produced in rabbit
Prestige Antibodies® Powered by Atlas Antibo...

SAB4503544
Sigma-Aldrich
Anti-Claudin 2 antibody produced in rabb...
affinity isolated antibody

SAB2104805
Sigma-Aldrich
Anti-CLDN18 antibody produced in rabbit
affinity isolated antibody

SAB5500144
Sigma-Aldrich
Anti-MSH2 antibody, Rabbit monoclonal clone SP46, recombinant, expressed in proprietary host...

HPA008070
Sigma-Aldrich
Anti-CALCRL antibody produced in rabbit
Prestige Antibodies® Powered by Atlas Antibo...

Properties

Related Categories	Alphabetical Index , Antibodies , CD-CL , CI-CN , Prestige Antibodies , More...
product line	Prestige Antibodies® Powered by Atlas Antibodies
conjugate	unconjugated
clone	polyclonal
biological source	rabbit
application(s)	immunohistochemistry: 1:500-1:1000
species reactivity	human
enhanced validation	orthogonal RNAseq Learn more about Antibody Enhanced Validation
form	buffered aqueous glycerol solution
shipped in	wet ice
storage temp.	-20°C
packaging	antibody small pack of 25 µL
antibody form	affinity isolated antibody
Quality Level	100
antibody product type	primary antibodies
immunogen sequence	MMCIACRGLAPEETNYKAVSYHASG HSVAYKPGGFKASTGFGSNTKNKKI YDGGARTEDEVQSYPSKHDYV

UniProt accession no.	P56856
Gene Information	human ... CLDN18(51208)

Description

Immunogen
claudin 18

Application

All Prestige Antibodies Powered by Atlas Antibodies are developed and validated by the Human Protein Atlas (HPA) project (www.proteinatlas.org) and as a result, are supported by the most extensive characterization in the industry.

The Human Protein Atlas project can be subdivided into three efforts: Human Tissue Atlas, Cancer Atlas, and Human Cell Atlas. The antibodies that have been generated in support of the Tissue and Cancer Atlas projects have been tested by immunohistochemistry against hundreds of normal and disease tissues and through the recent efforts of the Human Cell Atlas project, many have been characterized by immunofluorescence to map the human proteome not only at the tissue level but now at the subcellular level. These images and the collection of this vast data set can be viewed on the Human Protein Atlas (HPA) site by clicking on the Image Gallery link. To view these [protocols](#) and other useful information about Prestige Antibodies and the HPA, visit sigma.com/prestige.

Physical form

Solution in phosphate buffered saline, pH 7.2, containing 40% glycerol and 0.02% sodium azide.

Disclaimer

Unless otherwise stated in our catalog or other company documentation accompanying the product(s), our products are intended for research use only and are not to be used for any other purpose, which includes but is not limited to, unauthorized commercial uses, in vitro diagnostic uses, ex vivo or in vivo therapeutic uses or any type of consumption or application to humans or animals.

Legal Information

Prestige Antibodies is a registered trademark of Sigma-Aldrich Co. LLC

Features and Benefits

Prestige Antibodies® are highly characterized and extensively validated antibodies with the added benefit of all available characterization data for each target being accessible via the Human Protein Atlas portal linked just below the product name at the top of this page. The uniqueness and low cross-reactivity of the Prestige Antibodies® to other proteins are due to a thorough selection of antigen regions, affinity purification, and stringent selection. Prestige antigen controls are available for every corresponding Prestige Antibody and can be found in the linkage section.

Every Prestige Antibody is tested in the following ways:

- IHC tissue array of 44 normal human tissues and 20 of the most common cancer type tissues.
- Protein array of 364 human recombinant protein fragments.
- Validated for multiple commonly used applications such as IHC (Immunohistochemistry), IF (Immunofluorescence), and WB (Western Blot)

Linkage

Corresponding Antigen [APREST73168](#).

Safety Information

RIDADR	NONH for all modes of transport
WGK Germany	WGK 1
Flash Point(F)	Not applicable
Flash Point(C)	Not applicable

Documents

Certificate of Analysis (COA)

Enter Lot Number

[How to enter a Lot Number](#)
[View Sample COA](#)

[Bulk Quote-Order Product](#)

[Specification Sheet](#)

[SDS](#)

[Antibody Explorer](#)

Protocols & Articles

Articles

Antibody Basics

Immunoglobulins (Igs) are produced by B lymphocytes and secreted into plasma. The Ig molecule in monomeric form is a glycoprotein with a molecular weight of approximately 150 kDa that is shaped more ...
Keywords: Affinity chromatography, Centrifugation, Chromatography, Digestions, Direct immunofluorescence, Gene expression, High performance liquid chromatography, Immunofluorescence, Ion Exchange, Microscopy, Precipitation, Purification, Rheumatology, Scanning electron microscopy

Protocols

Prestige Antibody® Immunofluorescence Procedure

Prestige Antibodies® have been used for subcellular localization studies by immunocytochemistry (ICC) - immunofluorescence (IF) using the protocol described below. In addition to the primary antibody...
Keywords: Immunocytochemistry, Immunofluorescence, Immunostaining, Sample preparations

Prestige Antibody® Immunohistochemistry Procedure

Prestige Antibodies® developed for immunohistochemistry based expression profiling are recommended to be used according to the standard IHC staining protocol described below.
Keywords: Buffers, Dehydration reaction, Gene expression, Hydration reaction, Immunohistochemistry, Immunostaining, Tissue microarrays

[Prestige Antibody® Protein Immunoblotting Procedure](#)

Prestige Antibodies® recommended for Western Blot are recommended to be used according to the standard WB protocol described below. Western blot standard protocol optimized for
Keywords: Catalytic combustion detector, Electrophoresis, Gene expression, Sample preparations, Western blot

[Prestige Antigens™-Blocking Protocol](#)

Prestige Antigens and the corresponding Prestige Antibodies are recommended to be used according to the standard blocking protocol described below.
Keywords: Immunocytochemistry, Immunohistochemistry, Immunostaining, Titrations, Western blot

Related Content

[Antibody Explorer | Buy Primary Antibodies & Secondary Antibodies](#)

Primary, Secondary and Recombinant Monoclonal Antibodies Providing highly cited primary and secondary antibodies, we have you covered for your ELISA, western blot, immunohistochemistry or other assay...

Keywords: Alzheimer Disease, Cancer, Chromatin immunoprecipitation, Diagnostic, Enzyme-linked immunosorbent assay, Flow cytometry, Immunocytochemistry, Immunofluorescence, Immunohistochemistry, Neuroscience, Western blot

Peer-Reviewed Papers

[Did you use this product in your Paper? If so click here.](#)

[read abstract](#)

[Wnt/β-catenin promotes gastric fundus specification in mice and humans.](#)

Kyle W McCracken et. al
Nature, 541(7636), 182-187 (2017-1-5)

Despite the global prevalence of gastric disease, there are few adequate models in which to study the fundus epithelium of the human stomach. We differentiated human pluripotent stem cells (hPSCs) into gastric organoids containing fundic epithelium b...[Read More](#)

Related Products