

## Technical Data Sheet

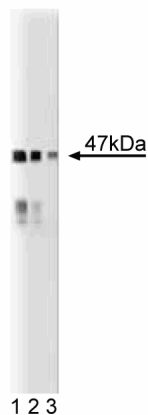
**Purified Mouse Anti-BAF47****Product Information**

|                         |  |
|-------------------------|--|
| <b>Material Number:</b> | <b>612111</b>  |
| <b>Alternate Name:</b>  | SNF5   |
| <b>Size:</b>            | 150 µg   |
| <b>Concentration:</b>   | 250 µg/ml  |
| <b>Clone:</b>           | 25/BAF47   |
| <b>Immunogen:</b>       | Mouse BAF47 aa. 257-359  |
| <b>Isotype:</b>         | Mouse IgG2a  |
| <b>Reactivity:</b>      | QC Testing: Mouse<br>Tested in Development: Rat, Human                       |
| <b>Target MW:</b>       | 47 kDa   |
| <b>Storage Buffer:</b>  | Aqueous buffered solution containing BSA, glycerol, and ≤0.09% sodium azide. |

**Description**

SWI/SNF complexes facilitate gene activation and transcription factor binding by altering repressive chromatin structures in an ATP-dependent manner. In mammals, SWI/SNF complexes are present in multiple forms that include 9-12 BRG1-associated factors (BAFs) per complex. These BAF proteins range in molecular weight from 47 to 250 kDa. BAF47/SNF5 (SMARCB1/Ini1) complexes with BRG1- and BRM-containing SWI/SNF complexes. BAF47/SNF5 mRNA is widely expressed in cell lines and tissues, and BAF47/SNF5 gene is mutated in many human tumors. The latter is indicative of a tumor suppressor role for BAF47/SNF5. In addition, mice deficient for BAF47 die early in embryogenesis, while BAF47/SNF5 heterozygous mice display a variety of tumors in the soft tissues of the head and neck. BAF47/SNF5 also binds the HIV-1 integrase and stimulates integrase-mediated DNA joining activity. Thus, BAF47/SNF5 is a component of SWI/SNF complexes that may be critical for normal development and tumor suppression, but may also be a protein utilized for viral DNA integration into host DNA.

This antibody is routinely tested by western blot analysis. Other applications were tested at BD Biosciences Pharmingen during antibody development only or reported in the literature.



**Western blot analysis of BAF47 on a mouse cerebrum lysate.** Lane 1: 1:250, lane 2: 1:500, lane 3: 1:1000 dilution of the anti-BAF47 antibody.

**Preparation and Storage**

The monoclonal antibody was purified from tissue culture supernatant or ascites by affinity chromatography. Store undiluted at -20° C.

**BD Biosciences**

bdbiosciences.com

|               |              |               |              |              |                         |
|---------------|--------------|---------------|--------------|--------------|-------------------------|
| United States | Canada       | Europe        | Japan        | Asia Pacific | Latin America/Caribbean |
| 877.232.8995  | 888.259.0187 | 32.53.720.550 | 0120.8555.90 | 65.6861.0633 | 55.11.5185.9995         |

For country-specific contact information, visit [bdbiosciences.com/how\\_to\\_order/](http://bdbiosciences.com/how_to_order/)

Conditions: The information disclosed herein is not to be construed as a recommendation to use the above product in violation of any patents. BD Biosciences will not be held responsible for patent infringement or other violations that may occur with the use of our products. Purchase does not include or carry any right to resell or transfer this product either as a stand-alone product or as a component of another product. Any use of this product other than the permitted use without the express written authorization of Becton Dickinson and Company is strictly prohibited.

For Research Use Only. Not for use in diagnostic or therapeutic procedures. Not for resale.

BD, BD Logo and all other trademarks are the property of Becton, Dickinson and Company. ©2006 BD



## Application Notes

### Application

|                    |                  |
|--------------------|------------------|
| Western blot       | Routinely Tested |
| Immunofluorescence | Not Recommended  |

## Suggested Companion Products

| <u>Catalog Number</u> | <u>Name</u>             | <u>Size</u> | <u>Clone</u> |
|-----------------------|-------------------------|-------------|--------------|
| 611455                | Mouse Cerebrum Lysate   | 500 µg      | (none)       |
| 554002                | HRP Goat Anti-Mouse Igs | 1.0 ml      | (none)       |

## Product Notices

1. Since applications vary, each investigator should titrate the reagent to obtain optimal results.
2. Please refer to [www.bdbiosciences.com/pharming/en/protocols](http://www.bdbiosciences.com/pharming/en/protocols) for technical protocols.
3. Caution: Sodium azide yields highly toxic hydrazoic acid under acidic conditions. Dilute azide compounds in running water before discarding to avoid accumulation of potentially explosive deposits in plumbing.
4. Source of all serum proteins is from USDA inspected abattoirs located in the United States.

## References

- Bruder CE, Dumanski JP, Kedra D. The mouse ortholog of the human SMARCB1 gene encodes two splice forms. *Biochem Biophys Res Commun.* 1999; 257(3):886-890.(Biology)
- Guidi CJ, Sands AT, Zambrowicz BP, et al. Disruption of *Ini1* leads to peri-implantation lethality and tumorigenesis in mice. *Mol Cell Biol.* 2001; 21(10):3598-3603. (Biology)
- Kalpana GV, Marmon S, Wang W, Crabtree GR, Goff SP. Binding and stimulation of HIV-1 integrase by a human homolog of yeast transcription factor SNF5. *Science.* 1994; 266(5193):2002-2006.(Biology)