

Product Datasheet

MYF-5 Antibody (OTI2G5)

NBP2-44245

Unit Size: 0.1 ml

Store at -20C. Avoid freeze-thaw cycles.

www.novusbio.com



technical@novusbio.com

Protocols, Publications, Related Products, Reviews, Research Tools and Images at:
www.novusbio.com/NBP2-44245

Updated 1/26/2018 v.20.1

Earn rewards for product
reviews and publications.

Submit a publication at www.novusbio.com/publications

Submit a review at www.novusbio.com/reviews/destination/NBP2-44245



NBP2-44245

MYF-5 Antibody (OTI2G5)

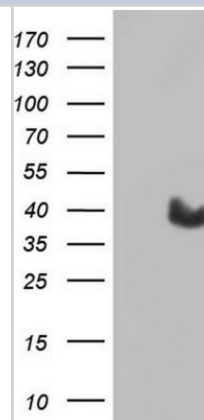
Product Information	
Unit Size	0.1 ml
Concentration	Please see the vial label for concentration. If unlisted please contact technical services.
Storage	Store at -20C. Avoid freeze-thaw cycles.
Clonality	Monoclonal
Clone	OTI2G5
Preservative	0.02% Sodium Azide
Isotype	IgG1
Purity	Immunogen affinity purified
Buffer	PBS (pH 7.3), 1.0% BSA and 50% Glycerol

Product Description	
Host	Mouse
Gene ID	4617
Gene Symbol	MYF5
Species	Human
Immunogen	Full length human recombinant protein of human MYF5 (NP_005584) produced in E.coli.

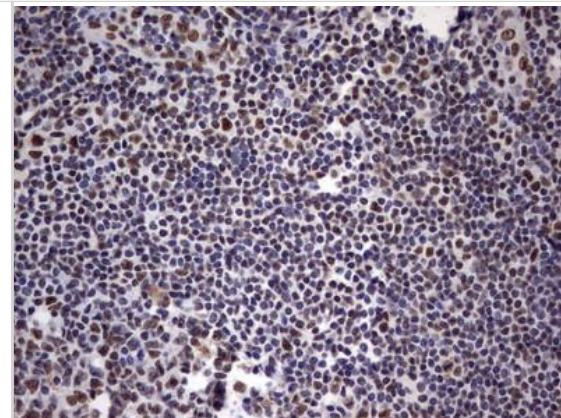
Product Application Details	
Applications	Western Blot, Immunohistochemistry, Immunohistochemistry-Paraffin
Recommended Dilutions	Western Blot 1:2000, Immunohistochemistry 1:150, Immunohistochemistry-Paraffin 1:150

Images

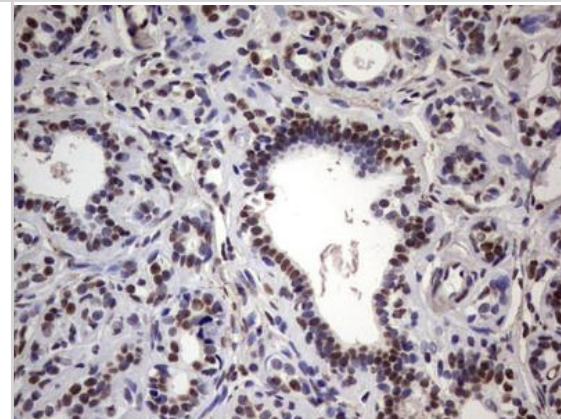
Western Blot: MYF-5 Antibody (OTI2G5) [NBP2-44245] - HEK293T cells were transfected with the pCMV6-ENTRY control (Left lane) or pCMV6-ENTRY MYF5 , (Right lane) cDNA for 48 hrs and lysed. Equivalent amounts of cell lysates (5 ug per lane) were separated by SDS-PAGE and immunoblotted with anti-MYF5



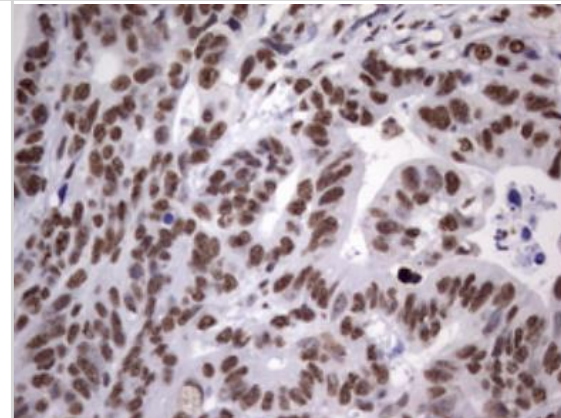
Immunohistochemistry-Paraffin: MYF-5 Antibody (OT12G5) [NBP2-44245] - Human tonsil within the normal limits using anti-MYF5 mouse monoclonal antibody. (Heat-induced epitope retrieval by 1 mM EDTA in 10mM Tris, pH8.5, 120C for 3min)



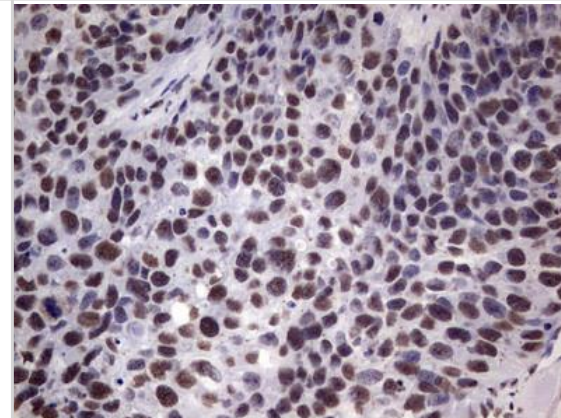
Immunohistochemistry-Paraffin: MYF-5 Antibody (OT12G5) [NBP2-44245] - Human breast tissue within the normal limits using anti-MYF5 mouse monoclonal antibody. (Heat-induced epitope retrieval by 1 mM EDTA in 10mM Tris, pH8.5, 120C for 3min)



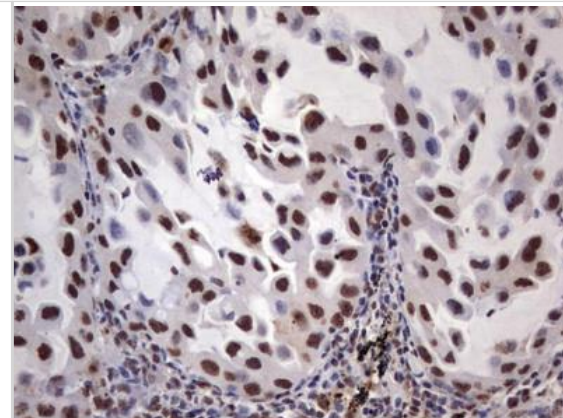
Immunohistochemistry-Paraffin: MYF-5 Antibody (OT12G5) [NBP2-44245] - Adenocarcinoma of Human colon tissue using anti-MYF5 mouse monoclonal antibody. (Heat-induced epitope retrieval by 1 mM EDTA in 10mM Tris, pH8.5, 120C for 3min)



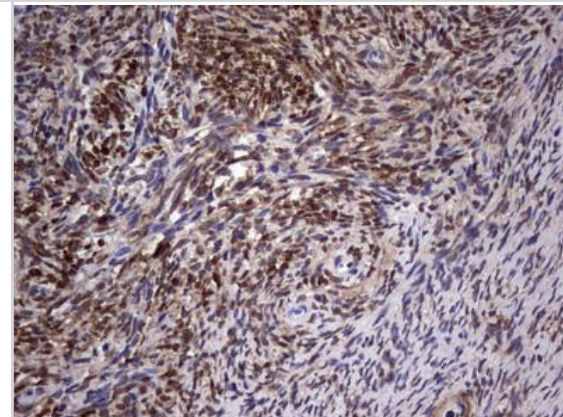
Immunohistochemistry-Paraffin: MYF-5 Antibody (OT12G5) [NBP2-44245] - Carcinoma of Human kidney tissue using anti-MYF5 mouse monoclonal antibody. (Heat-induced epitope retrieval by 1 mM EDTA in 10mM Tris, pH8.5, 120C for 3min)



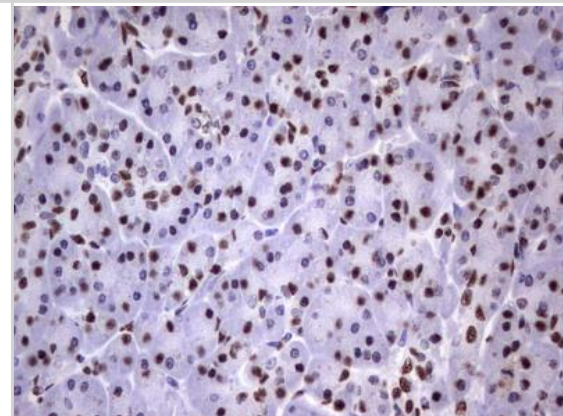
Immunohistochemistry-Paraffin: MYF-5 Antibody (OT12G5) [NBP2-44245] - Carcinoma of Human lung tissue using anti-MYF5 mouse monoclonal antibody. (Heat-induced epitope retrieval by 1 mM EDTA in 10mM Tris, pH8.5, 120C for 3min)



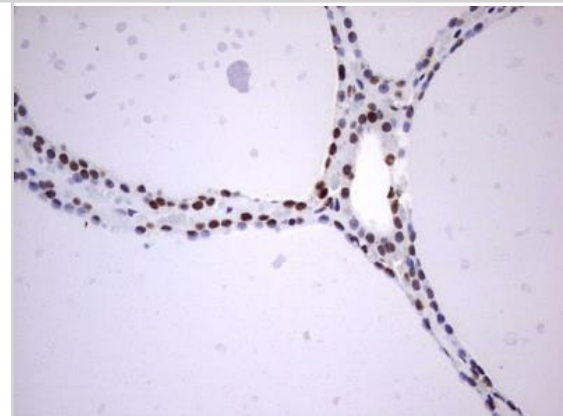
Immunohistochemistry-Paraffin: MYF-5 Antibody (OT12G5) [NBP2-44245] - Human Ovary tissue within the normal limits using anti-MYF5 mouse monoclonal antibody. (Heat-induced epitope retrieval by 1 mM EDTA in 10mM Tris, pH8.5, 120C for 3min)



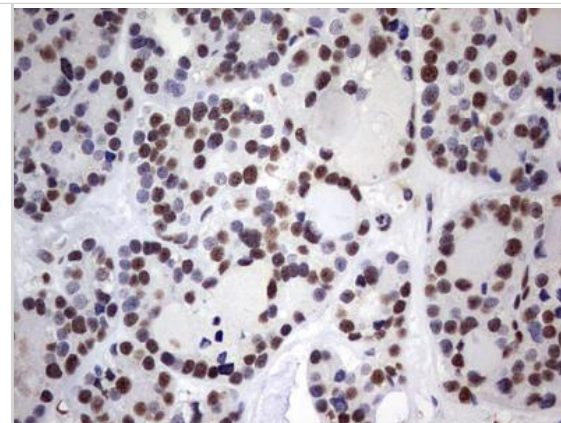
Immunohistochemistry-Paraffin: MYF-5 Antibody (OT12G5) [NBP2-44245] - Human pancreas tissue within the normal limits using anti-MYF5 mouse monoclonal antibody. (Heat-induced epitope retrieval by 1 mM EDTA in 10mM Tris, pH8.5, 120C for 3min)



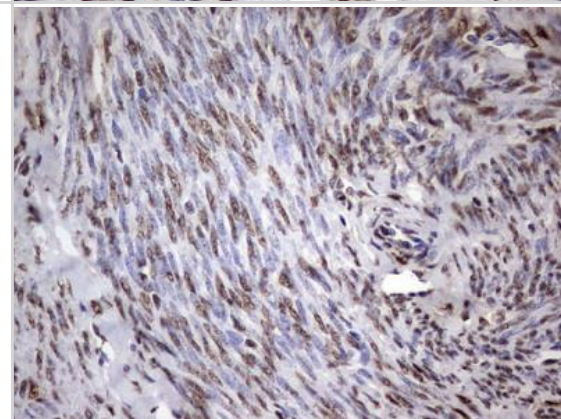
Immunohistochemistry-Paraffin: MYF-5 Antibody (OT12G5) [NBP2-44245] - Human thyroid tissue within the normal limits using anti-MYF5 mouse monoclonal antibody. (Heat-induced epitope retrieval by 1 mM EDTA in 10mM Tris, pH8.5, 120C for 3min)



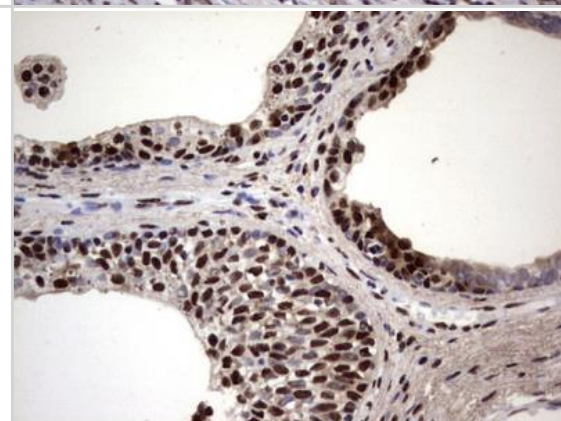
Immunohistochemistry-Paraffin: MYF-5 Antibody (OT12G5) [NBP2-44245] - Carcinoma of Human thyroid tissue using anti-MYF5 mouse monoclonal antibody. (Heat-induced epitope retrieval by 1 mM EDTA in 10mM Tris, pH8.5, 120C for 3min)



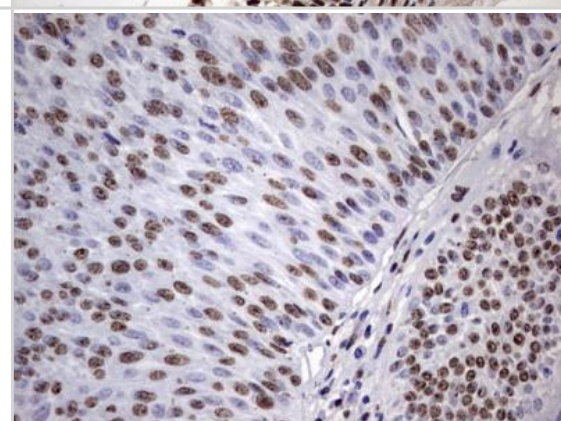
Immunohistochemistry-Paraffin: MYF-5 Antibody (OT12G5) [NBP2-44245] - Adenocarcinoma of Human endometrium tissue using anti-MYF5 mouse monoclonal antibody. (Heat-induced epitope retrieval by 1 mM EDTA in 10mM Tris, pH8.5, 120C for 3min)



Immunohistochemistry-Paraffin: MYF-5 Antibody (OT12G5) [NBP2-44245] - Carcinoma of Human prostate tissue using anti-MYF5 mouse monoclonal antibody. (Heat-induced epitope retrieval by 1 mM EDTA in 10mM Tris, pH8.5, 120C for 3min)



Immunohistochemistry-Paraffin: MYF-5 Antibody (OT12G5) [NBP2-44245] - Carcinoma of Human bladder tissue using anti-MYF5 mouse monoclonal antibody. (Heat-induced epitope retrieval by 1 mM EDTA in 10mM Tris, pH8.5, 120C for 3min)





Novus Biologicals USA

8100 Southpark Way, A-8
Littleton, CO 80120
USA

Phone: 303.730.1950
Toll Free: 1.888.506.6887
Fax: 303.730.1966
novus@novusbio.com

Novus Biologicals Canada

461 North Service Road West, Unit B37
Oakville, ON L6M 2V5
Canada

Phone: 905.827.6400
Toll Free: 855.668.8722
Fax: 905.827.6402
canada@novusbio.com

Novus Biologicals Europe

19 Barton Lane
Abingdon Science Park
Abingdon, OX14 3NB, United Kingdom
Phone: (44) (0) 1235 529449
Free Phone: 0800 37 34 15
Fax: (44) (0) 1235 533420
info@bio-techne.com

General Contact Information

www.novusbio.com
Technical Support: technical@novusbio.com
Orders: orders@novusbio.com
General: novus@novusbio.com

Products Related to NBP2-44245

NB820-59203	Human Breast Whole Tissue Lysate (Adult Whole Normal)
HAF007	Goat anti-Mouse IgG Secondary Antibody [HRP (Horseradish Peroxidase)]
NB720-B	Rabbit anti-Mouse IgG (H+L) Secondary Antibody [Biotin]
NBP1-97005	Mouse IgG1 Isotype Control

Limitations

This product is for research use only and is not approved for use in humans or in clinical diagnosis. Primary Antibodies are guaranteed for 1 year from date of receipt.

For more information on our 100% guarantee, please visit www.novusbio.com/guarantee

Earn gift cards/discounts by submitting a review: www.novusbio.com/reviews/submit/NBP2-44245

Earn gift cards/discounts by submitting a publication using this product:
www.novusbio.com/publications

