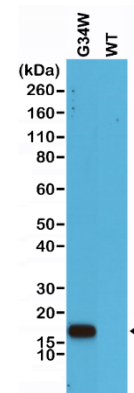
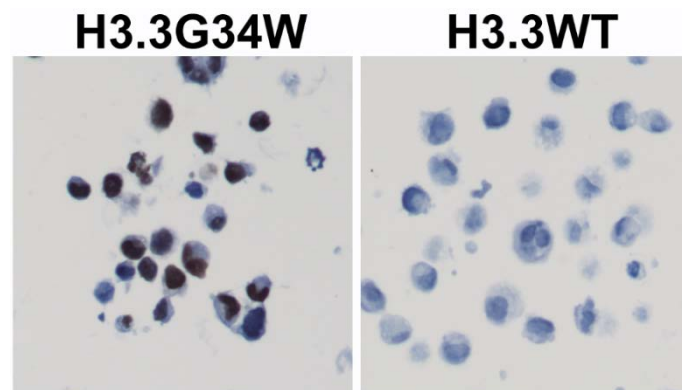


## Certificate of Analysis

<b>Product:</b>	Rabbit Monoclonal Antibody Anti-Histone H3.3 G34W Rabbit Monoclonal Antibody, Clone RM263
<b>Catalog No.:</b>	31-1145-00
<b>Lot No.:</b>	
<b>Clone:</b>	RM263
<b>Specificity:</b>	This antibody reacts to the Histone H3.3 G34W mutant. No cross reactivity with wild type Histone H3.3
<b>Application:</b>	Western Blot, ELISA, Immunohistochemistry and Immunocytochemistry.
<b>Immunogen:</b>	A peptide corresponding to Histone H3.3 G34W mutant
<b>Purity:</b>	Protein A affinity purified from an animal origin-free culture supernatant
<b>Concentration:</b>	1 mg/mL
<b>Size:</b>	50 µg
<b>Buffer:</b>	50% Glycerol/PBS with 1% BSA and 0.09% sodium azide
<b>Usage:</b>	WB: 0.5 - 2 µg/mL; ELISA: 0.5 - 2 µg/mL; IHC, ICC/IF: 0.5 - 5 µg/mL.
<b>Storage and Stability:</b>	Stable for 1 Year at -20.0°C from date of receipt.
<b>Country of Origin:</b>	U.S.A.
<b>Intended Use:</b>	<b>For Research Use Only Not for Diagnostic or Therapeutic Use</b>



DNA construct encoding G34W mutant or wild type proteins of Histone H3.3, using anti-Histone H3.3 G34W clone RM263.



Immunohistochemical staining of formalin fixed and paraffin embedded 293T cells transfected with a DNA construct encoding Histone H3.3 G34W mutant or wild type, stained with anti-Histone H3.3 G34W clone RM263.