



MONOCLONAL ANTIBODY

For research use only. Not for diagnostic use.

Catalog No. KAN-25503-96-EX

Anti-Mucin monoclonal antibody M-GGMC-1 (Clone : HIK1083)

BACKGROUND

M-GGMC-1 is a mouse monoclonal antibody which recognizes the peripheral alpha-linked *N*-acetylglucosamine residue present in the carbohydrate moiety of the mucin molecule and reacts with oligosaccharides bearing a peripheral α -GlcNAc structure. M-GGMC-1 recognizes the mucins derived from the normal gastric mucosal cells (mucosal neck cells and pyloric gland cells) and Brunner's gland cells in the gastrointestinal tract of mammalian. In addition, M-GGMC-1 can be used to detect adenoma malignum in the uterine cervical glands have been reported. This antibody is a useful tool for elucidating the biological role of the specific sugar chain.

Product type	Primary antibody
Immunogen	Rat Gastric mucin
Host Species	Mouse
Fusion Partner	Sp2/0
Clone Designation	HIK1083
Isotype	IgM, κ
Source	Hybridoma cell culture
Purification	-
Form	Lyophilized powder (culture supernatant including 1% Bovine serum albumin and 0.05% NaN ₃)
Formulation Buffer	-
Concentration	-
Volume	1mL (Reconstituted product with 1mL of deionized or distilled water)
Label	Unlabeled
Specificity	Mucin-type oligosaccharides bearing a peripheral α -linked GlcNAc structure Epitope : Sugar chain motif; GlcNAc α 1-R
Cross species reactivity	-
Storage Conditions	Store at 4°C Reconstituted antibody store at 4°C for immediate use and -20°C or lower for long-term storage. Avoid freeze / thaw cycles.

**Application notes
Recommended
dilutions**

- **ELISA** : 1/10 – 1/1000
- **Immunohistochemistry**: 1/5 - 1/50 (formalin-fixation, paraffin-embedded)

Other applications have not been tested.
Optimal dilutions/concentrations should be determined by the end user.

References

- 1) K. Ishihara, *et. al.*, (1996) *Biochem. J.* 318(Pt2), 409-416. PMID: [8809027](#)
- 2) N Nakamura, *et. al.*, (1998) *J Histochem Cytochem.* 46(7). 793-801. PMID: [9632738](#)
- 3) T. Honda, *et. al.*, (1998) *Am J Clin Pathol.* 109(4). 423-430. PMID: [9535396](#)
- 4) K Ishii, *et. al.*, (1998) *Virchows Arch.* 432(4). 315-322. PMID: [9565340](#)
- 5) J Nakayama, *et. al.*, (1999) *Proc Natl Acad Sci USA.* 96(16). 8991-8996. PMID: [10430883](#)
- 6) T Ikezawa, *et. al.*, (2004) *J Gastroenterol.* 39(2). 113-119. PMID: [5069617](#)
- 7) S Kubota, *et. al.*, (2007) *Clin Chim Acta.* 377(1-2). 261-267. PMID: [17134689](#)
- 8) M Iijima, *et. Al.*, (2007) *Am J Dermatopathol.* 29(5). 452-456. PMID: [17890913](#)

ANTIBODY CHARACTERIZATION

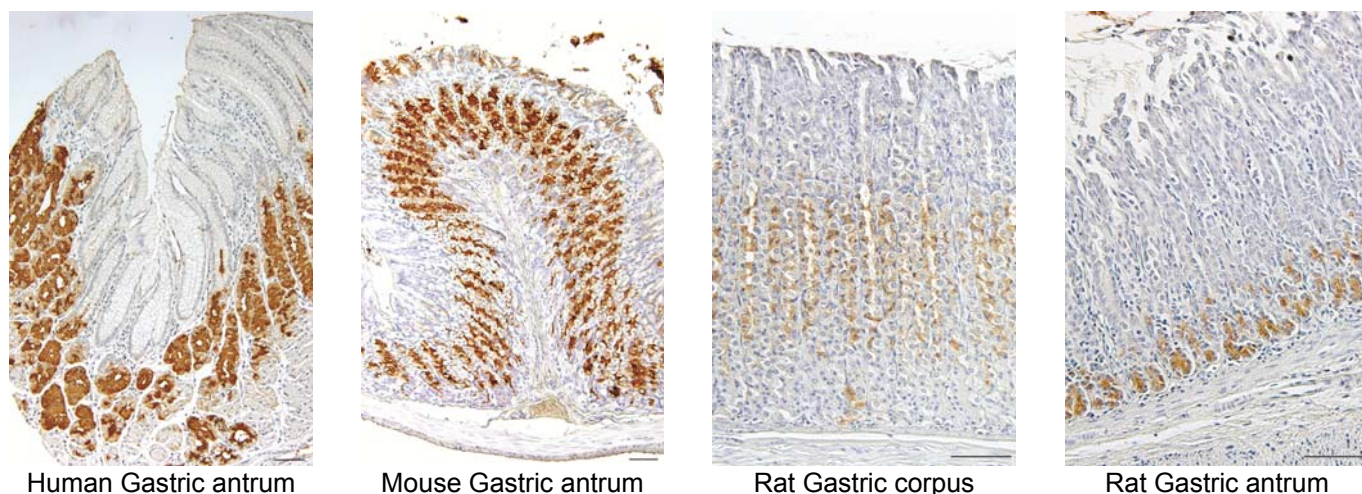


Fig.1 Immunohistochemistry

RELATED PRODUCTS:

Product Name	Clone	Maker	Cat#
Anti Mucin mAb M-GGMC-1 (Lyophilized powder of culture supernatant)	HIK1083	KAN	25503-96
Anti Sugar chain [GlcNAc α 1-R] mAb (DEAE-Sepharose purified)	HIK1083	KAN	02101-96
Anti Sugar chain [Fuca1-2Gal β 1-3GlcNAc β 1-R] mAb	RGM21	KAN	02102-96
Anti Sugar chain [GalNAc α 1-3Gal β 1-R] mAb	RGM22	KAN	02103-96
Anti Sugar chain [GalNAc α 1-3(Fuca1-2)Gal β 1-R] mAb	RGM26	KAN	02104-96
Anti Sugar chain [Fuca1-2Gal β 1-R] mAb	RGM31	KAN	02105-96
Anti Sugar chain [GalNAc α 1-R] mAb	RGM42	KAN	02106-96
Anti Sugar chain [Fuca1-2Gal β 1-4(HSO ³ -6)GlcNAc β 1-R] mAb	PGM34	KAN	02107-96
Anti Sugar chain [Fuca1-2Gal β 1-3(Fuca1-4)GlcNAc β 1-R] mAb	HGM44	KAN	02108-96
Anti Sugar chain [GalNAc α 1-3(Fuca1-2)Gal β 1-3(Fuca1-4)GlcNAc β 1-R] mAb	HGM75	KAN	02109-96
Anti Sugar chain [GlcNAc α 1-4Gal β 1-4GlcNAc β 1-R] mAb	HGM504	KAN	02110-96
Anti Sugar chain [Fuca1-2Gal β 1-4(Fuca1-3)GlcNAc β 1-R] mAb	HGM505	KAN	02111-96
Anti Sugar chain [GlcNAc α 1-4Gal β 1-R] mAb	HGM507	KAN	02112-96

For research use only, Not for diagnostic use.

Manufactured by 関東化学株式会社



COSMO BIO CO., LTD.

Inspiration for Life Science

TOYO 2CHOME, KOTO-KU, TOKYO, 135-0016, JAPAN

URL: <http://www.cosmobio.co.jp>

e-mail: export@cosmobio.co.jp

[Outside Japan] Phone : +81-3-5632-9617

[国内連絡先] Phone : +81-3-5632-9610

FAX : +81-3-5632-9618

FAX : +81-3-5632-9619