

Product Datasheet

CAMTA1 Antibody **NBP1-93620**

Unit Size: 0.1 ml

Store at 4C short term. Aliquot and store at -20C long term. Avoid freeze-thaw cycles.

www.novusbio.com



support@novusbio.com

Publications: 1

Protocols, Publications, Related Products, Reviews, Research Tools and Images at:
www.novusbio.com/NBP1-93620

Updated 11/15/2015 v.20.1

NBP1-93620

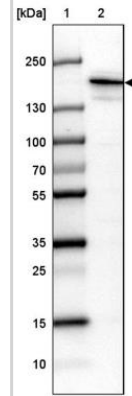
CAMTA1 Antibody

Product Information	
Unit Size	0.1 ml
Concentration	Concentrations vary lot to lot. See vial label for concentration. If unlisted please contact technical services.
Storage	Store at 4C short term. Aliquot and store at -20C long term. Avoid freeze-thaw cycles.
Clonality	Polyclonal
Preservative	0.02% Sodium Azide
Isotype	IgG
Purity	Affinity purified
Buffer	Phosphate buffered saline, pH 7.2, containing 40% glycerol
Product Description	
Host	Rabbit
Gene ID	23261
Gene Symbol	CAMTA1
Species	Human
Specificity/Sensitivity	Specificity of antibody verified on a Protein Array containing target protein plus 383 other non-specific proteins.
Immunogen	This antibody was developed against Recombinant Protein corresponding to amino acids:ESLSMLPTNVSEELVLSTTLDGGRKIPETTMNFPDCFLNNPKQGQTYGGGLKAEMVSSNIRHSPGERSFSFTTVLTKEIKTE
Product Application Details	
Applications	Western Blot, Immunocytochemistry/Immunofluorescence, Immunohistochemistry, Immunohistochemistry-Paraffin
Recommended Dilutions	Immunocytochemistry/Immunofluorescence 1-4 ug/ml, Immunohistochemistry 1:10-1:500, Immunohistochemistry-Paraffin 1:50-1:200, Western Blot 1:100 - 1:250
Application Notes	For IHC-Paraffin HIER pH6 retrieval is recommended. Immunofluorescence fixation permeabilization: PFA/Triton X-100.

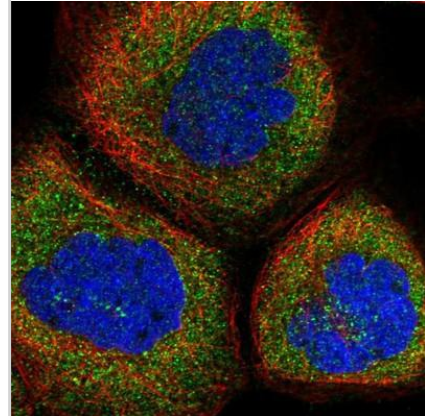


Images

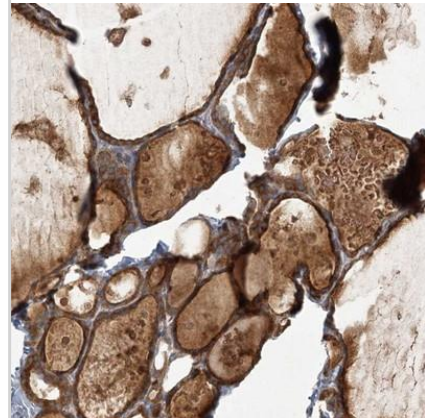
Western Blot: CAMTA1 Antibody [NBP1-93620] - Lane 1: Marker [kDa]
250, 130, 100, 70, 55, 35, 25, 15, 10 Lane 2: SK-MEL-30



Immunocytochemistry/Immunofluorescence: CAMTA1 Antibody [NBP1-93620] - Staining of human cell line A-431 shows positivity in cytoplasm.



Immunohistochemistry-Paraffin: CAMTA1 Antibody [NBP1-93620] - Staining of human thyroid gland shows strong cytoplasmic positivity in glandular cells.



Publications

Shibuya R, Matsuyama A, Shiba E et al. CAMTA1 is a useful immunohistochemical marker for diagnosing epithelioid hemangioendothelioma Histopathology 2015 Apr 16 [PMID: 25879300] (IHC-P, Human)



Novus Biologicals USA

8100 Southpark Way, A-8
Littleton, CO 80120
USA
Phone: 303.730.1950
Toll Free: 1.888.506.6887
Fax: 303.730.1966
novus@novusbio.com

Novus Biologicals Canada

461 North Service Road West, Unit B37
Oakville, ON L6M 2V5
Canada
Phone: 905.827.6400
Toll Free: 855.668.8722
Fax: 905.827.6402
canada@novusbio.com

Novus Biologicals Europe

19 Barton Lane
Abingdon Science Park
Abingdon, OX14 3NB, United Kingdom
Phone: (44) (0) 1235 529449
Free Phone: 0800 37 34 15
Fax: (44) (0) 1235 533420
info@bio-techne.com

General Contact Information

www.novusbio.com
Technical Support: technical@novusbio.com
Orders: orders@novusbio.com
General: novus@novusbio.com

Error: Subreport could not be shown.

Limitations

This product is for research use only and is not approved for use in humans or in clinical diagnosis. Primary Antibodies are guaranteed for 1 year from date of receipt.

For more information on our guarantee, please visit www.novusbio.com/guarantee.

