

Product datasheet

Anti-Pepsinogen I antibody [7G3] ab50123

★★★★☆ 3 Abreviews | 1 Image

Overview

Product name	Anti-Pepsinogen I antibody [7G3]
Description	Mouse monoclonal [7G3] to Pepsinogen I
Tested applications	IHC-P, ELISA, Sandwich ELISA
Species reactivity	Reacts with: Human
Immunogen	Full length native protein (purified)

Properties

Form	Liquid
Storage instructions	Shipped at 4°C. Upon delivery aliquot and store at -20°C or -80°C. Avoid repeated freeze / thaw cycles.
Storage buffer	Preservative: 0.09% Sodium Azide Constituents: 0.15M Sodium chloride, 15mM PBS, pH 7.2
Purity	Protein A purified
Clonality	Monoclonal
Clone number	7G3
Isotype	IgG1

Applications

Our [Abpromise guarantee](#) covers the use of **ab50123** in the following tested applications.

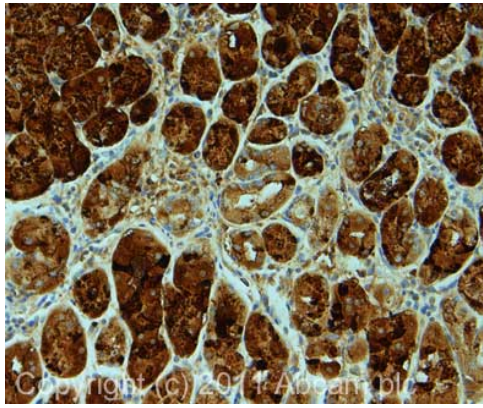
The application notes include recommended starting dilutions; optimal dilutions/concentrations should be determined by the end user.

Application	Abreviews	Notes
IHC-P	★★★★☆	Use a concentration of 1 µg/ml. Perform heat mediated antigen retrieval with citrate buffer pH 6 before commencing with IHC staining protocol.
ELISA		Use a concentration of 1 - 10 µg/ml. Can be paired for ELISA with Mouse monoclonal [2F5] to Pepsinogen I (ab50607) .
Sandwich ELISA		Use at an assay dependent concentration.

Target

Function	Shows particularly broad specificity; although bonds involving phenylalanine and leucine are preferred, many others are also cleaved to some extent.
Sequence similarities	Belongs to the peptidase A1 family.
Cellular localization	Secreted.

Anti-Pepsinogen I antibody [7G3] images



Immunohistochemistry (Formalin/PFA-fixed paraffin-embedded sections)-Pepsinogen I antibody [7G3](ab50123)

IHC image of ab50123 staining in human normal stomach formalin fixed paraffin embedded tissue section, performed on a Leica Bond™ system using the standard protocol F. The section was pre-treated using heat mediated antigen retrieval with sodium citrate buffer (pH6, epitope retrieval solution 1) for 20 mins. The section was then incubated with ab50123, 1µg/ml, for 15 mins at room temperature and detected using an HRP conjugated compact polymer system. DAB was used as the chromogen. The section was then counterstained with haematoxylin and mounted with DPX.

For other IHC staining systems (automated and non-automated) customers should optimize variable parameters such as antigen retrieval conditions, primary antibody concentration and antibody incubation times.

Please note: All products are "FOR RESEARCH USE ONLY AND ARE NOT INTENDED FOR DIAGNOSTIC OR THERAPEUTIC USE"

Our Abpromise to you: Quality guaranteed and expert technical support

- Replacement or refund for products not performing as stated on the datasheet
- Valid for 12 months from date of delivery
- Response to your inquiry within 24 hours
- We provide support in Chinese, English, French, German, Japanese and Spanish
- Extensive multi-media technical resources to help you
- We investigate all quality concerns to ensure our products perform to the highest standards

If the product does not perform as described on this datasheet, we will offer a refund or replacement. For full details of the Abpromise, please visit <http://www.abcam.com/abpromise> or contact our technical team.

Terms and conditions

- Guarantee only valid for products bought direct from Abcam or one of our authorized distributors